

IMMEDIATE ACTION

SERVICE



BULLETIN

NUMBER 72

December 27, 1943
Rev. Date: 2-20-46

SUBJECT: Rudder Pedal and Floorboard Attachment Lugs

MODELS AFFECTED: J3 and J5 Series

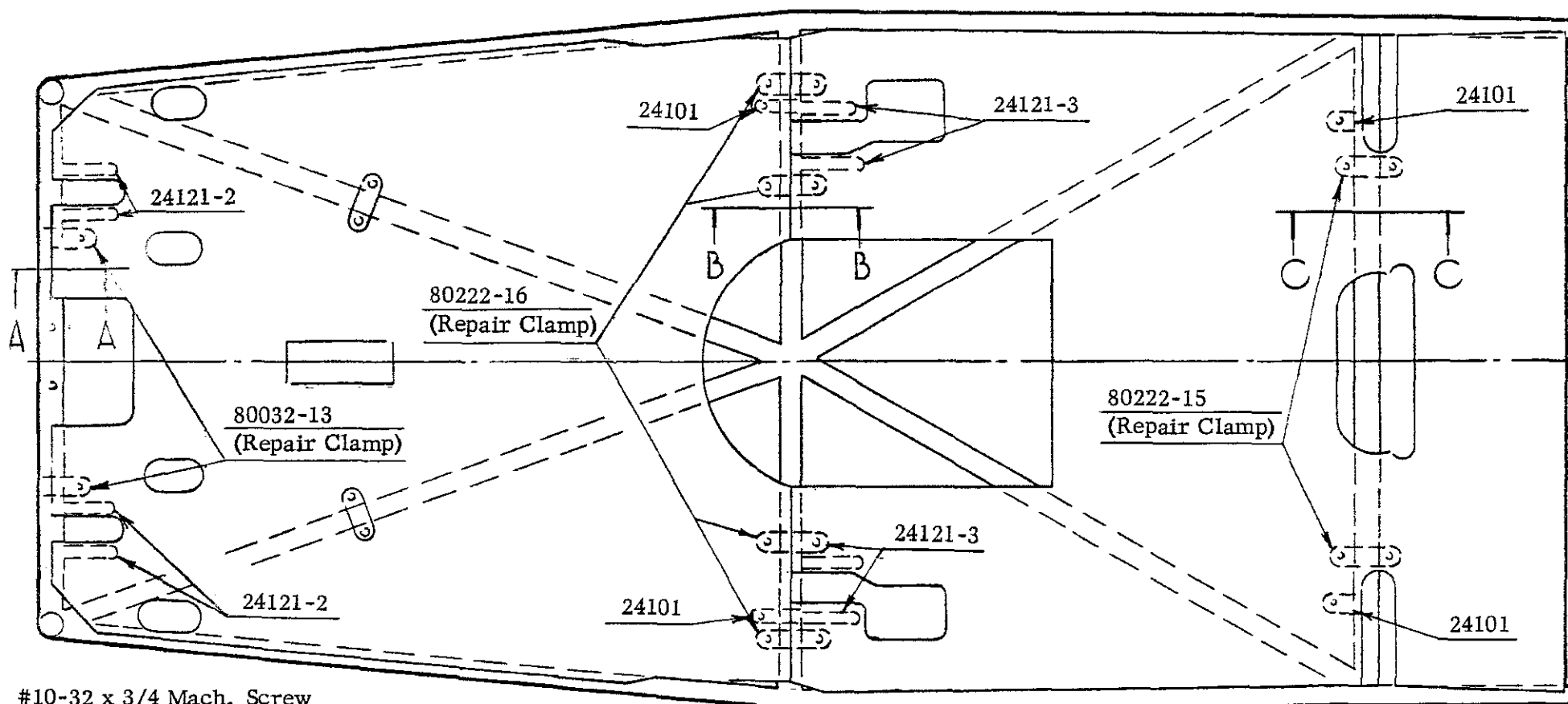
A number of reports have recently been received regarding failure of the floorboard and rudder pedal lug attachment to the tubular structure. This is apparently due to continued flexing of these parts during operation. As it may be possible to foul the controls as a result of such failures, we recommend that an immediate check be made to determine whether or not these fittings are intact on your airplane.

The points of chief concern should be at or near the rudder pedals, and these points should be checked at each periodic inspection of the airplane.

In the event that such failures are discovered, a temporary repair may be effected by attaching the floorboard with a clamp fastened about the tubular structure immediately adjacent to the failed part. (See attached sketches.) SAE No. 1025 steel strip .045" thick by 3/4" wide is recommended for such clamps. The original fittings should then be re-welded or replaced when convenient; in which case the repair clamps may be reinstalled for additional strength.

Clamps of appropriate sizes and replacement parts may be obtained through your local dealer or distributor.

PIPER AIRCRAFT CORPORATION, LOCK HAVEN, PA., U. S. A.



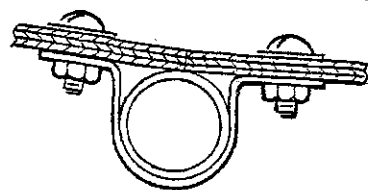
#10-32 x 3/4 Mach. Screw

80122-11

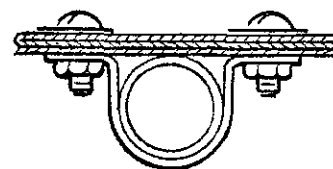
Plain Nut 14 Req'd.



SECTION A-A
Half Size



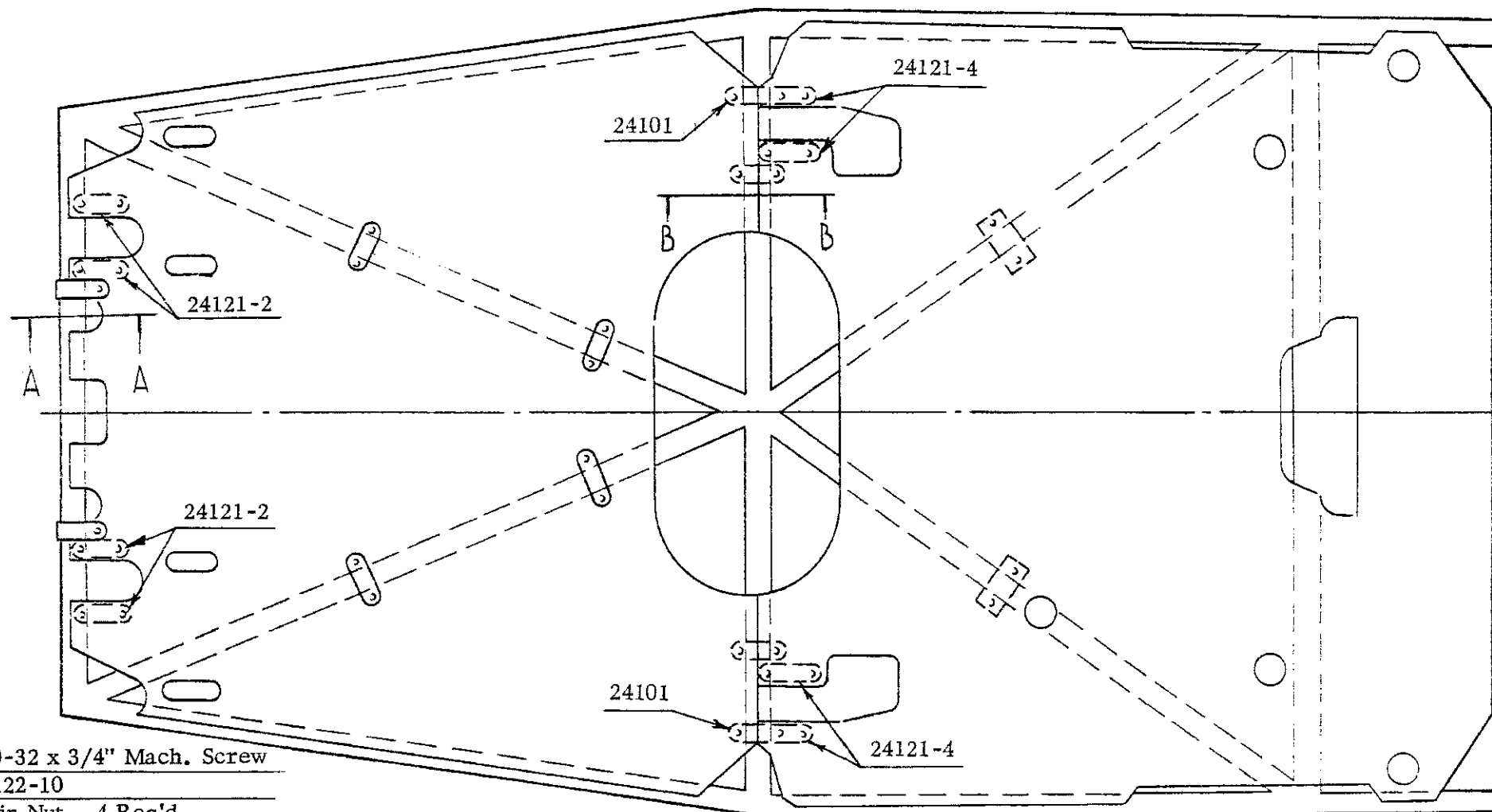
SECTION B-B
Half Size



SECTION C-C
Half Size

MODEL J3

FLOORBOARD FITTING REPAIR

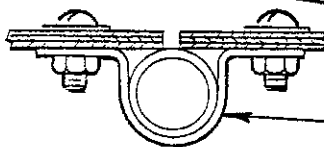


#10-32 x 3/4" Mach. Screw
80122-10
Plain Nut 4 Req'd.



80032-13 (Repair
Clamp) 2 Req.

SEC. A-A
Half Size



80222-17 (Repair Clamp)
2 Req'd.

SEC. B-B
Half Size

MODEL J5

FLOORBOARD FITTING REPAIR