

Misc/TP-1005B

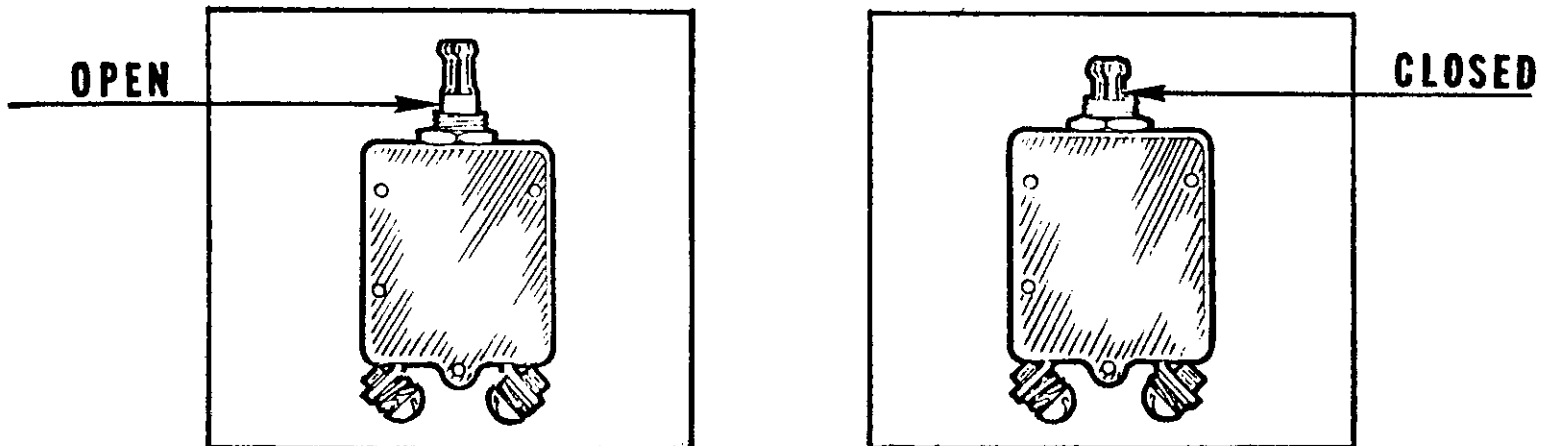
## INSTALLATION OF WOOD CIRCUIT PROTECTORS

(All Models)

All current production model aircraft are being equipped with Wood circuit protectors. This circuit protector incorporates a safety feature that allows the circuit to be broken manually, if a dangerous condition exists in an electrical circuit, by pulling out the circuit protector push-pull button.

A few seconds are required before the circuit protector can be reset; however, should a dangerous overload still exist, the contact cannot be held closed even manually. On overload, the protector remains open until manually reset.

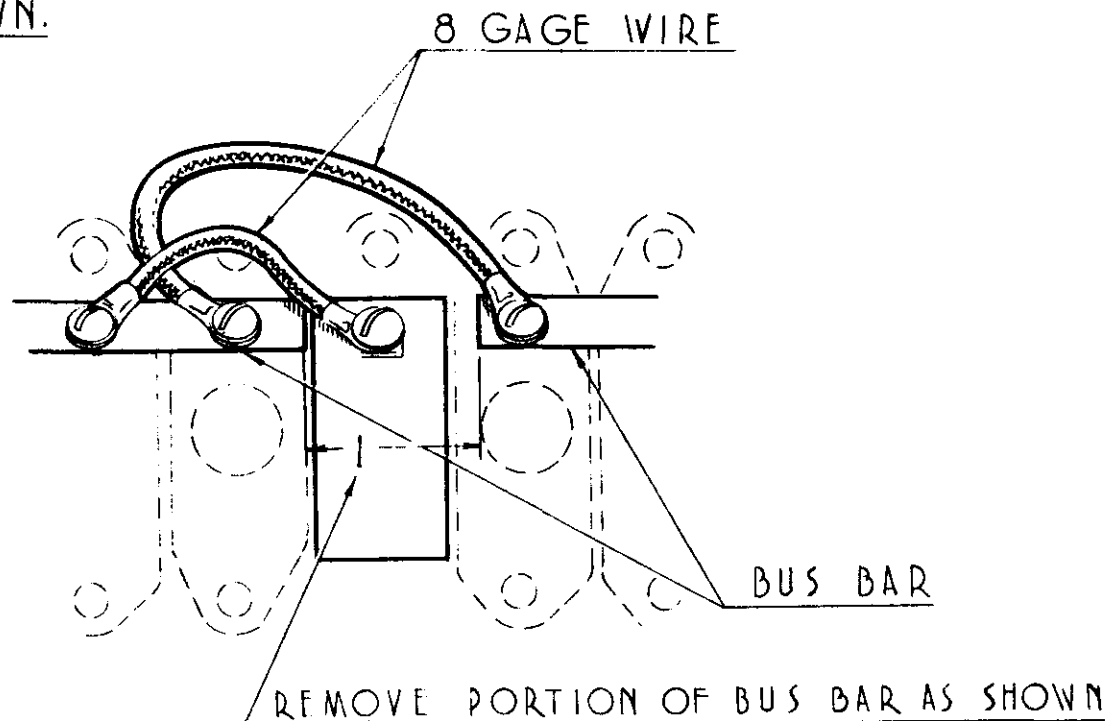
Whenever a Wood circuit protector is installed in conjunction with other type circuit protectors, a suggested installation is shown on the reverse side of this Service Aid.



**PIPER AIRCRAFT CORPORATION, LOCK HAVEN, PA., U. S. A.**

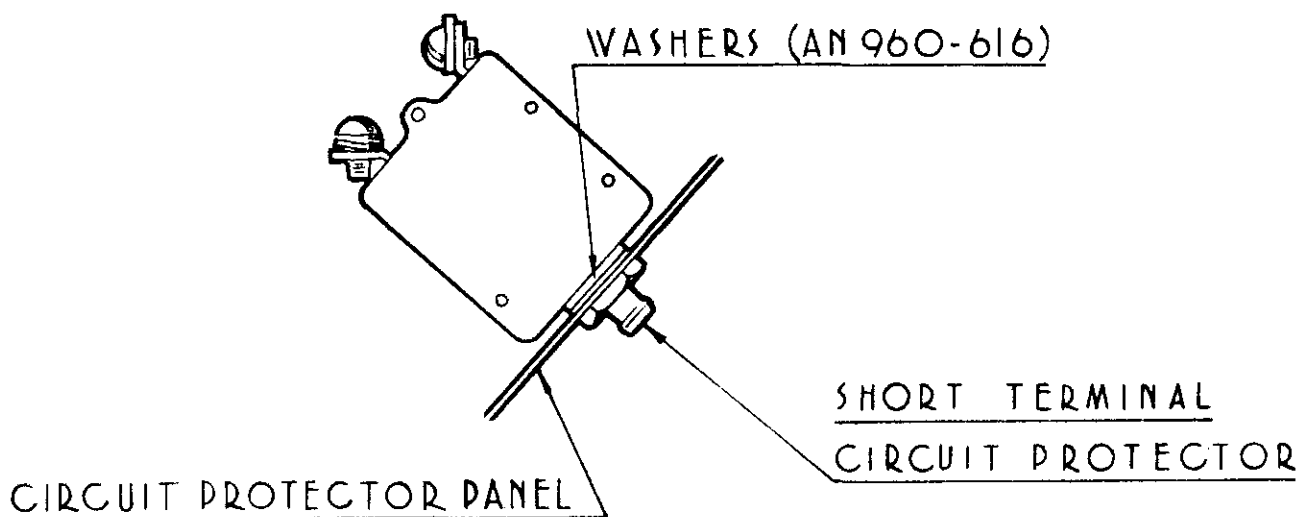
NOTE :

WHEN SPENCER CIRCUIT PROTECTORS  
ARE INSTALLED, INSTALL WOOD CIRCUIT PROTECTOR  
AS SHOWN.



NOTE :

WHEN THERE ARE WOOD CIRCUIT PROTECTORS WITH LONG  
TERMINALS AND SHORT TERMINALS IN THE SAME PANEL, USE TWO  
AN 960-616 WASHERS BETWEEN SHORT TERMINAL PROTECTOR  
AND PANEL.



MISC./TP-1005B