

## IMMEDIATE ACTION

# SERVICE



# BULLETIN

NUMBER 80

October 14, 1940  
Rev. Date: 2-18-46

**SUBJECT:** Fuel Valve Control

**MODELS AFFECTED:** J3 and J4 (EXCEPT THOSE WITH AUXILIARY FUEL TANKS INSTALLED)

In accordance with C.A.A. Airworthiness Maintenance Bulletin No. 34, which you may have or will soon receive, a spring is to be installed on the fuel shut-off as shown on the attached drawing.

The function of the spring is to assist opening of the valve. Note that it extends from the end of the valve arm, where it is attached over the hook of the control wire, to the right front vertical fuselage member (adjacent to the firewall) where it is attached by a clamp.

It is necessary, therefore, that owners of the airplanes noted above make an inspection to determine whether or not the fuel shut-off valve installed in each affected airplane incorporates stops at the valve. If no stops are provided, it will be necessary to follow either procedure listed below.

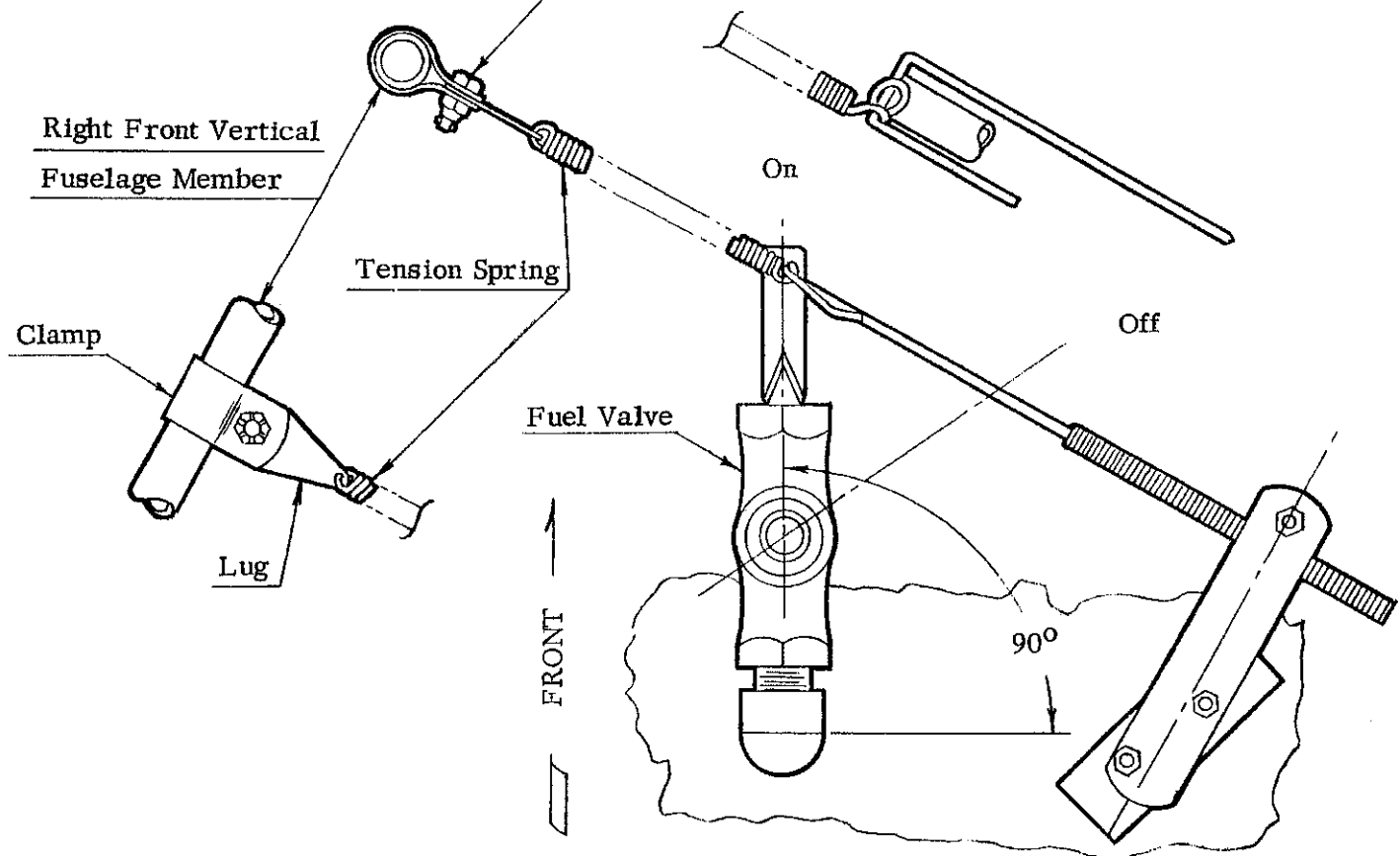
- A. Install a valve which incorporates stops. This may be obtained from your local dealer or distributor.
- B. If no stops are provided and procedure (A) is not followed, the fuel valve should be lightly safetied in the "ON" position so that in an emergency it will be possible to close the valve. However, the safety will eliminate the possibility of the valve being closed under other than emergency conditions.

An appropriate entry should be made in the airplane log book following the installation of these parts.

NOTE: This bulletin was formerly Service Bulletin Nos. 32 and 38.

**PIPER AIRCRAFT CORPORATION, LOCK HAVEN, PA., U. S. A.**

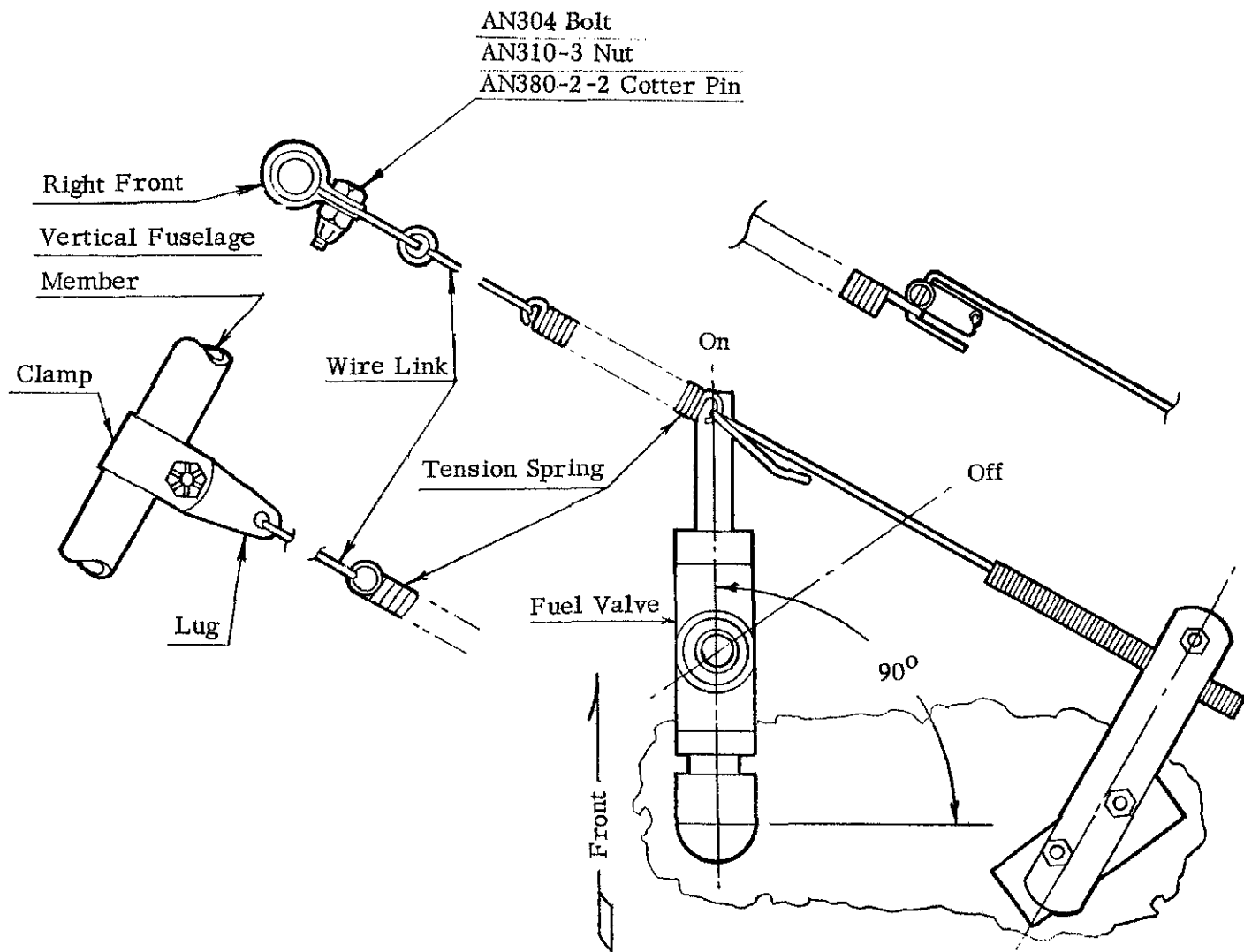
AN304 Bolt  
AN310-3 Nut  
AN380-2-2 Cotter Pin



Bottom View Of Fuel Tank

# FUEL VALVE SPRING INSTALLATION

MODEL I3



BOTTOM VIEW OF FUEL TANK

# FUEL VALVE SPRING INSTALLATION

MODEL J4

SERVICE BULLETIN NO. 80