

## IMMEDIATE ACTION

# SERVICE



# BULLETIN

July 29, 1947

Bulletin No. 99

SUBJECT: HEADER TANK INSTALLATION IN PA-11 AIRPLANES SERIAL NOS. 11-111-301 INCL. AND 11-1350 TO 11-1400 INCL. EXCEPT SERIAL NOS. 11-233, 11-243, 11-261, 11-266, 11-281, 11-296 AND 11-300.

TO: OWNERS OF SUBJECT PA-11 AIRPLANES

This installation is mandatory on all subject PA-11's. Its purpose is to prevent possible malfunctioning of the engine due to insufficient fuel flow in prolonged glides or dives with less than five gallons of fuel in the main tank.

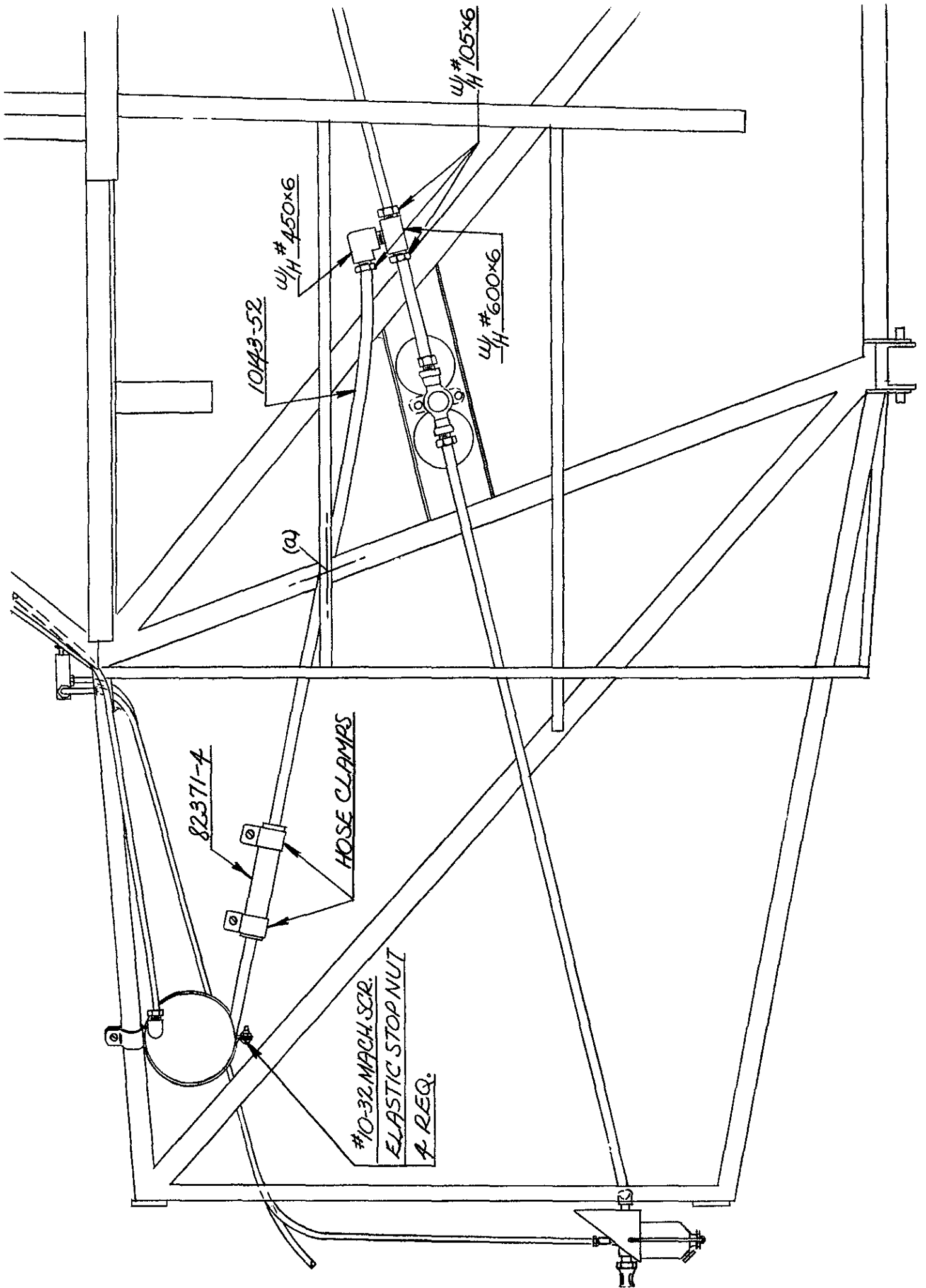
A header tank kit is provided free of charge and may be obtained through your Distributor by furnishing him with your ship's serial number. The header tank kit is composed of the following parts:

1. Header Tank Piper Part no. 10725.
2. 21 3/8" section of 3/8" aluminum fuel line. Piper Part no. 10143-52.
3. 3 3/4" section of 3/4" rubber fuel line, Piper Part no. 82371-4, with two Ideal hose clamps.
4. Two header tank clamps, Piper Part nos. 11299-2 and 11299-3.
5. One Weatherhead inverted tee, No. 600 X 6.
6. One Weatherhead female elbow, No. 450 X 6.
7. One 1/8" pipe plug.
8. Three Weatherhead inverted tube nuts. No. 105 X 6.
9. Four #10-32 x 5/8" RH Mach. screw with four elastic stop nuts, No. 22M02.
10. 18" Felt 1/16" x 1/2", No. 180 497.

### DIRECTIONS FOR INSTALLATION (See Sketches reverse this bulletin)

1. Drain fuel from system at gascolator or wing tank drain.
2. Remove left cockpit side panel. No cutting of fabric necessary during entire installation.
3. Install header tank as per enclosed drawing, making sure that outlet tube points in direction of fuel shut-off valve. Left end of tank should be 12 1/2" off aircraft centerline. Centerline of tank should be 5 1/2" aft of firewall.
4. Disconnect at shut-off valve main fuel line from tank to valve. Cut tube off 5 7/8" from end and flare both ends of the severed line at the cut.
5. Assemble elbow (part 6 above) to tee (part 5 above).

**PIPER AIRCRAFT CORPORATION, LOCK HAVEN, PA., U. S. A.**



6. Assemble tee between newly flared ends of cut fuel line, with elbow facing forward.

7. Hold short aluminum line (Part No. 2 above) in place between header tank and elbow to determine where taping will be necessary due to contact with structure. Tape tube as required, and shellac tape. Maintain as straight a line as possible from header to elbow with no dip in line, making sure that line clears channel and tube at point (a).

8. Depress elbow and tee slightly so that the short section of line ahead of tee will clear heater control box upon reinstallation of side panel.

9. Install rubber fuel line connecting header tank to Part 2, with hose clamps.

10. Disconnect vent line at gascolator, remove inverted male connector from top of tee, and install plug (Part 7 above) in gascolator.

11. Cut vent line off 20", or at proper length to re-install in top of header tank. Flare tube and use inverted nut from cut off line at gascolator for this connection. Install in header.

12. Reinstall side panels, trimming forward panel slightly as required to clear header tank.

Header tank installation must be covered with C.A.A. Form 337 and appropriate entry made in Aircraft Log Book.

This installation should be made at the first opportunity. Until header tank is installed, operate the aircraft with caution with less than 5 gallons of fuel.

SERVICE DEPARTMENT  
PIPER AIRCRAFT CORPORATION

