

# ERCOUPE • FORNEY • ALON • MOONEY

## CONTENTS

Univair is the Type Certificate holder for the Ercoupe 415 series, Forney, Alon, and M-10 Cadet. We have thousands of quality parts specifically for these airplanes. Many of our parts are made on the original tooling that was used when these great aircraft were being made.

Manuals .....	26	Fuel System.....	34
Brake System .....	26	Instruments • Gauges.....	35
Center Section.....	27	Landing Gear .....	35
Cockpit • Interior .....	28	Propellers.....	38
Control System .....	29	Service Kits and Assemblies .....	38
Electrical System .....	30	Spinners.....	41
Engine • Cowling.....	31	Tail Section.....	41
Exhaust System.....	32	Windows • Windshields.....	42
Frame.....	33	Wings.....	43

**Many parts can be correctly identified by the nomenclature listed in this section. However, we suggest that you also have the correct parts manual for positive identification.**

## Manuals

Description	Part #	Price
Alon A-2 Flight Manual (originally produced for U.K. CAA) .....	LFM .....	\$17.44
Alon A-2 Service Bulletins.....	LSB .....	\$17.44
Alon A-2/A-2A Service Manual .....	LSM .....	\$17.44
Alon A-2A Owners Manual.....	LWM .....	\$11.48
Ercoupe Service Bulletins/Memos .....	EBM .....	\$43.81
Ercoupe Service Manual .....	ESM .....	\$30.62
Ercoupe Flight Manual, 415-C* .....	CFM .....	\$11.48
* The 415-C originally did not have a flight manual. It was not required at the time (Ref Ercoupe Info Letter No. 2). What we supply is the 415-D flight manual and include a 415-C Weight and Balance Supplement.		
Ercoupe Flight Manual, 415-D.....	DFM .....	\$11.48
Ercoupe Flight Manual, 415-E/G/F-1 .....	EGF .....	\$11.48
Fundamentals of Elementary Ercoupe Flight Maneuvers .....	EFM .....	\$23.82
Ercoupe Owners Instruction Manual .....	EWM .....	\$11.48
Ercoupe Parts Manual .....	EPM .....	\$9.25
Ercoupe Specifications, ADs and STCs.....	ESS .....	\$34.03
Forney F-1 Instruction Manual.....	FWM .....	\$11.48

Forney F-1A Parts Manual.....	FPM .....	\$25.52
Forney F-1/F-1A Service Manual.....	FSM .....	\$25.52
Forney F-1A Flight and Operation Manual .....	F1A .....	\$11.48

Mooney M-10 Owners Manual, 1969.....	MWM69 .....	\$21.27
Mooney M-10 Owners Manual, 1970.....	MWM70 .....	\$21.27
Mooney M-10 Parts Catalog.....	MPM .....	\$25.52
Mooney M-10 Service Manual .....	MSM .....	\$55.29

## Brake System

Description	Part #	Price
Angle .....	A33500-29 .....	\$12.78
Brake Pedal Arm .....	F33458 .....	\$233.75
Arm Linkage .....	F33478 .....	\$90.13
Bellcrank.....	415-33435 .....	\$33.29
Bellcrank.....	F33473 .....	\$73.05
Brake Line .....	415-33429 .....	\$24.97
Brake Pedal .....	A33500-21 .....	\$58.74
Brake Cable Assembly.....	415-33448 .....	\$65.67
Fitting .....	415-33446 .....	\$30.28

Tube Fitting.....	415-33445	<b>\$10.33</b>
Pulley Guard.....	415-33442	<b>\$22.34</b>
Brake Handle.....	F33474	<b>\$46.27</b>
Brake Handle.....	F33476	<b>\$121.78</b>
Landing Gear Tube Tee, Left.....	415-33430	<b>\$58.47</b>
Brake Pedal Support, Left.....	415-33433-L	<b>\$24.38</b>
Tube Assembly, Left.....	415-33455	<b>\$28.02</b>
Tube Assembly, Left.....	F33457-L	<b>\$23.38</b>
Lever Arm.....	A33500-13	<b>\$8.11</b>
Plate.....	A33500-35	<b>\$4.47</b>
Brake Reservoir Plug.....	415-33447	<b>\$11.35</b>
Landing Gear Tube Tee, Right.....	415-33431	<b>\$53.71</b>
Brake Pedal Support, Right.....	415-33433-R	<b>\$24.38</b>
Tube Assembly, Right.....	415-33456	<b>\$29.41</b>
Tube Assembly, Right.....	F33457-R	<b>\$23.38</b>
Brake Cylinder Support.....	415-33440	<b>\$40.15</b>
Support.....	F33472	<b>\$194.81</b>
Trigger Arm.....	F33479	<b>\$65.75</b>
Tube Assembly.....	415-33428	<b>\$25.31</b>

**Brake Reservoir Assembly Kit**

- For hydraulic fluid brakes
- Kit includes all hardware necessary for installation



U33443A ..... **\$364.58**

**Center Section**

<b>Description</b>	<b>Part #</b>	<b>Price</b>
Channel.....	415-13020-L	<b>\$21.64</b>
Channel.....	415-13020-R	<b>\$21.64</b>
Lower Fitting, Left.....	415-13021-L	<b>\$349.88</b>
Lower Fitting, Right.....	415-13021-R	<b>\$349.88</b>
Gusset, Left.....	415-13023-L	<b>\$27.39</b>
Gusset, Right.....	415-13023-R	<b>\$27.39</b>
Fitting, Left.....	415-13025-L	<b>\$349.88</b>
Fitting, Right.....	415-13025-R	<b>\$349.88</b>
Gusset.....	415-13030	<b>\$9.71</b>
Beam Reinforcement.....	415-13031	<b>\$67.42</b>
Stiffener.....	415-13032-L	<b>\$15.09</b>
Stiffener.....	415-13032-R	<b>\$15.09</b>
Stiffener.....	415-13033-L	<b>\$12.45</b>
Stiffener.....	415-13033-R	<b>\$12.45</b>
Stiffener.....	415-13034-L	<b>\$15.57</b>
Stiffener.....	415-13034-R	<b>\$15.57</b>
Stiffener.....	415-13037-L	<b>\$38.45</b>
Stiffener.....	415-13037-R	<b>\$38.45</b>
Fitting, Left.....	415-13038-L	<b>\$349.88</b>
Fitting, Right.....	415-13038-R	<b>\$349.88</b>
Shim.....	415-13044	<b>\$7.01</b>
Rear Beam Splice.....	415-13049	<b>\$110.80</b>

Stiffener.....	415-13051	<b>\$19.55</b>
Center Fillet, Left.....	415-13054-L	<b>\$106.53</b>
Right.....	415-13054-R	<b>\$106.53</b>
Fairing Bottom.....	415-13055-2-L	<b>\$289.79</b>
Fairing Bottom.....	415-13055-2-R	<b>\$289.79</b>
Fillet, Left.....	415-13055-L	<b>\$276.00</b>
Stiffener, Right.....	415-13056-R	<b>\$20.45</b>
Stiffener.....	415-13057-L	<b>\$37.34</b>
Stiffener.....	415-13057-R	<b>\$37.34</b>
Reinforcement.....	415-13062	<b>\$45.82</b>
Shim.....	415-13065	<b>\$3.03</b>
Stiffener.....	415-13102-1	<b>\$7.28</b>
Stiffener.....	415-13102-2	<b>\$7.79</b>
Floorboard Angle.....	415-13102-3	<b>\$23.46</b>
Rear Beam, Left.....	415-13103-L	<b>\$556.13</b>
Rear Beam, Right.....	415-13103-R	<b>\$502.03</b>
Window Track, Left.....	415-13106-L	<b>\$96.55</b>
Window Track, Right.....	415-13106-R	<b>\$96.55</b>
Bracket, Left.....	415-13107-L	<b>\$8.00</b>
Beam Fitting, Left.....	415-13121-L	<b>\$116.91</b>
Beam Fitting, Right.....	415-13121-R	<b>\$116.91</b>
Beam Fitting, Left.....	415-13125-L	<b>\$114.48</b>
Beam Fitting, Right.....	415-13125-R	<b>\$114.48</b>
Web, Left.....	415-13129-1	<b>\$10.55</b>
Plate.....	415-13129-2	<b>\$12.78</b>
Stiffener.....	415-13131	<b>\$55.22</b>
Beam Fitting, Left.....	415-13138-L	<b>\$113.93</b>
Right.....	415-13138-R	<b>\$113.93</b>
Reinforcement Ring.....	415-13280-01	<b>\$26.18</b>
Inspection Plate.....	415-13280-03	<b>\$23.10</b>
Ercoupe Reinforcement Ring.....	415-13281-01	<b>\$23.02</b>
Inspection Plate.....	415-13281-03	<b>\$20.25</b>
Alon/Mooney Rod.....	A13270-57	<b>\$28.04</b>
Fitting, Left.....	F13008-L	<b>\$115.45</b>
Right.....	F13008-R	<b>\$115.45</b>
Rear Beam Hinge.....	F13009	<b>\$69.16</b>
Trailing Edge Stiffener.....	F13043	<b>\$20.48</b>
Stiffener.....	F13061	<b>\$29.21</b>
Bracket, Right.....	F13107-R	<b>\$8.00</b>
Reinforcement.....	F13109	<b>\$23.85</b>
Reinforcement.....	F13120	<b>\$7.28</b>
Shim.....	F13144	<b>\$2.74</b>

**Center Section Skins**

Skin Assembly, Left.....	415-13040-1L	<b>\$251.62</b>
Right.....	415-13040-1R	<b>\$251.62</b>
Corrugated Skin.....	415-13041	<b>\$63.30</b>
Corrugated Skin.....	415-13042	<b>\$97.06</b>
Skin Assembly, Left.....	415-13047-1-L	<b>\$214.36</b>
Right.....	415-13047-1-R	<b>\$214.36</b>
Skin Assembly, Left.....	415-13047-L	<b>\$625.56</b>
Right.....	415-13047-R	<b>\$625.56</b>
Leading Edge Skin.....	415-13019	<b>\$57.45</b>
Belly Skin.....	F13058-1	<b>\$380.62</b>
Lower Skin Assembly, Left.....	F13147-1-L	<b>\$297.55</b>
Right.....	F13147-1-R	<b>\$297.55</b>

**Center Section Ribs**

Diagonal Rib, Left.....	415-13004-L.....	<b>\$103.51</b>
Right.....	415-13004-R.....	<b>\$103.51</b>
End Rib, Left.....	415-13014-L.....	<b>\$110.91</b>
Right.....	415-13014-R.....	<b>\$110.91</b>
Walkway Outer Rib, Left.....	415-13015-L.....	<b>\$146.97</b>
Right.....	415-13015-R.....	<b>\$146.97</b>
Rib, Left.....	415-13016-2L.....	<b>\$138.94</b>
Right.....	415-13016-2R.....	<b>\$138.94</b>
Walkway Inner Rib, Left.....	415-13016-L.....	<b>\$146.79</b>
Right.....	415-13016-R.....	<b>\$146.79</b>
Walkway Trailing Edge Rib, Left.....	415-13017-L.....	<b>\$295.62</b>
Right.....	415-13017-R.....	<b>\$295.62</b>
Walkway Trailing Edge End Rib, Left.....	415-13018-L.....	<b>\$111.77</b>
Right.....	415-13018-R.....	<b>\$111.77</b>
End Rib, Left.....	415-13035-L.....	<b>\$160.48</b>
Right.....	415-13035-R.....	<b>\$160.48</b>
End Rib, Left.....	415-13135-L.....	<b>\$242.72</b>
Right.....	415-13135-R.....	<b>\$160.48</b>
Walkway Box End Rib Assembly, Left.....	F13114-L.....	<b>\$619.25</b>
Right.....	F13114-R.....	<b>\$619.25</b>

**Fillet Assembly**

Left.....	F13060-L.....	<b>\$1,138.13</b>
Right.....	F13060-R.....	<b>\$1,138.13</b>



**Center Section Cap Strips**

Lower (S/N 1 to 812).....	415-13028.....	<b>\$4,944.71</b>
Lower (S/N 813 and up).....	415-13128.....	<b>\$5,093.06</b>

**Cockpit • Interior**

<b>Description</b>	<b>Part #</b>	<b>Price</b>
Alon Air Vent, Left.....	950208-011.....	<b>\$233.43</b>
Right.....	950208-012.....	<b>\$233.43</b>
Tachometer Shaft.....	415-51016-28.....	<b>\$14.24</b>
Elevator Trim Control Plate.....	415-51064.....	<b>\$5.32</b>
Bottom Overlay Panel.....	415-51085.....	<b>\$75.04</b>
Primer Handle.....	415-51088.....	<b>\$14.12</b>
Trim Control Arm.....	415-51089.....	<b>\$9.99</b>
Throttle Handle, Female.....	415-51090-1.....	<b>\$19.55</b>
Male.....	415-51090-2.....	<b>\$19.55</b>
Trim Control Handle, Female.....	415-51093-1.....	<b>\$14.56</b>
Male.....	415-51093-2.....	<b>\$14.56</b>
Throttle Catch Pawl.....	415-51094.....	<b>\$11.16</b>
Cabin Heat Control.....	415-51107.....	<b>\$91.95</b>
Cable Clamp Assembly.....	415-51108.....	<b>\$8.00</b>
Shaft.....	415-51117.....	<b>\$43.84</b>
Trim Nameplate.....	415-51121.....	<b>\$12.13</b>

Cabin Air Control Cable.....	415-51158.....	<b>\$101.94</b>
Hub Cover.....	415-52055-C.....	<b>\$85.71</b>
Latch.....	415-53005-5.....	<b>\$5.05</b>
Plate Cover.....	415-53028.....	<b>\$7.79</b>
Yoke Blanks.....	415-53029-9.....	<b>\$25.13</b>
Rear Deck.....	415-53071-1.....	<b>\$77.68</b>
Plate Lock.....	415-53077.....	<b>\$5.60</b>
Lock Plate.....	415-53082.....	<b>\$40.18</b>
Jam Pin.....	415-53086.....	<b>\$1.94</b>
Arm, Left.....	415-53089-L.....	<b>\$23.82</b>
Right.....	415-53089-R.....	<b>\$23.82</b>
Scuff Plate.....	415-53092.....	<b>\$4.73</b>
Map Compartment, Left.....	415-53108-L.....	<b>\$36.54</b>
Right.....	415-53108-R.....	<b>\$36.54</b>
Trim Strip.....	415-53124.....	<b>\$2.43</b>
Clip Wire.....	415-53134-1.....	<b>\$3.15</b>
Hinge.....	415-53135.....	<b>\$53.40</b>
Side Cabin Soundproofing, Left.....	415-53137-L.....	<b>\$7.79</b>
Right.....	415-53137-R.....	<b>\$7.79</b>
Cabin Soundproofing.....	415-53139.....	<b>\$12.23</b>
Frame.....	415-53202.....	<b>\$7.08</b>
Tube.....	415-53205.....	<b>\$4.32</b>
Clip Mounting.....	415-53209.....	<b>\$12.13</b>
Cable Assembly.....	415-53227.....	<b>\$89.96</b>
Box Assembly.....	415-53302-16.....	<b>\$63.34</b>
Fresh Air Housing.....	415-53302-7.....	<b>\$25.79</b>
Instrument Panel.....	F51082.....	<b>\$413.99</b>
Rubber Control Guide Packing.....	F51083-26.....	<b>\$2.47</b>
Throttle Arm.....	F51091.....	<b>\$33.86</b>
Trim Control Collar.....	F51092.....	<b>\$165.35</b>
Torque Tube.....	F51111.....	<b>\$149.98</b>
Bearing.....	F51114.....	<b>\$10.94</b>
Quadrant Housing.....	F51123.....	<b>\$48.67</b>
Quadrant Assembly.....	F51124.....	<b>\$870.68</b>
Parking Brake.....	F51161.....	<b>\$217.61</b>
Draft Seal, Left.....	F53212-L.....	<b>\$37.07</b>
Right.....	F53212-R.....	<b>\$37.07</b>
Felt Seal.....	F53215.....	<b>\$18.34</b>

**Cabin Sunshade**

• Aluminum	
415-53058A.....	<b>\$667.67</b>



**Ercoupe Window Welt**

• 2 required per plane	
• Priced and sold individually	
415-53169.....	<b>\$58.35</b>



**Original Control Wheel for Ercoupe**

- Plastic cover fits on hub of control wheel (sold separately)
- Cessna logo in center
- Choose from three hub colors – red, black or maroon
- Control wheel available in black only



Hub cover  
(sold separately)



Hub Cover on Control Wheel  
(shown installed)

Control Wheel, For S/N 1 to 4423 .....	415-52055-6 .....	<b>\$53.30</b>
415-C Control Wheel Shaft .....	415-52055-2 .....	<b>\$304.95</b>
415-D Control Wheel Shaft .....	415-52069-2 .....	<b>\$304.95</b>
Hub Covers, With Ercoupe Logo		
Red .....	52055-ERC-RED .....	<b>\$52.00</b>
Black .....	52055-ERC-BLK .....	<b>\$52.00</b>
Maroon .....	52055-ERC-MAR .....	<b>\$45.00</b>

**Ercoupe Baggage Compartment**

415-53175 ..... **\$160.93**



**Glove Box**

Glove Box, Left .....	415-51028-L .....	<b>\$99.65</b>
Right .....	415-51028-R .....	<b>\$99.65</b>
Glove Box Door .....	415-51013-20 .....	<b>\$250.04</b>
Glove Compartment Door .....	415-51096 .....	<b>\$250.04</b>



**Floors**



Floorboard .....	415-52399 .....	<b>\$169.43</b>
Floorboard Cover Plate .....	415-53070 .....	<b>\$104.18</b>
Floor Support .....	415-53078 .....	<b>\$40.66</b>
Floorboard .....	F52492-1 .....	<b>\$51.16</b>
Floor Panel .....	F52492-2 .....	<b>\$54.54</b>
Slanting Floorboard .....	F53059-1 .....	<b>\$99.58</b>
Lower Floorboard Assembly .....	F53069 .....	<b>\$182.49</b>
Floorboard Support .....	F53080 .....	<b>\$20.72</b>
Rug Assembly, Model C, S/N up to 4424 .....	F53174 .....	<b>\$184.80</b>
Rug Assembly, Model G, S/N 4424 and up .....	F53174-G .....	<b>\$184.80</b>

**Seats**

Seat Bottom Assembly .....	415-53004 .....	<b>\$786.66</b>
Seat Back Side Member, Left .....	415-53007-L .....	<b>\$453.04</b>
Right .....	415-53007-R .....	<b>\$453.04</b>
Seat Back Top Rail .....	415-53008 .....	<b>\$126.66</b>
Seat Back Bottom Rail .....	415-53009 .....	<b>\$48.16</b>
Seat Back Center Member .....	415-53010 .....	<b>\$77.95</b>
Seat Assembly .....	415-53016 .....	<b>\$2,539.37</b>
Seat Back Frame .....	415-53016-B .....	<b>\$1,555.35</b>
Seat Belt Fitting .....	415-53030 .....	<b>\$97.55</b>
Seat Belt Triangle .....	415-53036 .....	<b>\$75.86</b>
Safety Belt Fastener Shackle .....	415-53037 .....	<b>\$8.46</b>
Seat Hinge Pin .....	415-53134-2 .....	<b>\$40.46</b>
Seat .....	415-53242 .....	<b>\$6.07</b>
Head Rest .....	415-53243 .....	<b>\$19.55</b>
Back Seat Frame .....	F53231 .....	<b>\$449.87</b>

**Control System**

Description	Part #	Price
Control Mast Shaft .....	415-52058 .....	<b>\$84.76</b>
Control Mast Arm .....	415-52068 .....	<b>\$410.84</b>
Control Wheel Shaft .....	415-52069-2 .....	<b>\$304.95</b>
Chain Assembly .....	415-52107 .....	<b>\$30.51</b>
Universal Joint .....	415-52113 .....	<b>\$375.12</b>
Control Shaft Assembly .....	415-52129 .....	<b>\$1,848.53</b>
Control Column Quadrant .....	415-52137 .....	<b>\$277.38</b>
Control Column Shim .....	415-52149 .....	<b>\$3.44</b>
Control Wheel Guide .....	415-52150 .....	<b>\$94.26</b>
Arm Assembly Kit .....	415-52177 .....	<b>\$59.90</b>
Arm Assembly .....	415-52180 .....	<b>\$35.08</b>
Holder, Left .....	415-52182-1 .....	<b>\$33.07</b>
Right .....	415-52182-2 .....	<b>\$33.07</b>
Mooney Bellcrank Elevator Arm .....	415-52204 .....	<b>\$121.15</b>
Elevator Arm Shaft .....	415-52208-1 .....	<b>\$19.02</b>
Elevator Control Arm Assembly .....	415-52228 .....	<b>\$50.32</b>
Handle Crank .....	415-52236 .....	<b>\$9.49</b>
Trim Crank Knob .....	415-52244 .....	<b>\$2.91</b>
Rudder Pedal .....	415-52390 .....	<b>\$1,296.87</b>
Pedal Assembly .....	415-52390-A .....	<b>\$1,164.33</b>
Pulley Assembly .....	415-52395-R-A .....	<b>\$127.77</b>
Arm Assembly .....	415-52403 .....	<b>\$140.81</b>
Rudder Bellcrank .....	415-52427 .....	<b>\$506.57</b>
Alon Shaft Assembly .....	A52435-19 .....	<b>\$628.38</b>
Alon Control Mast .....	A52437 .....	<b>\$584.47</b>
Control Mast .....	A52437-3 .....	<b>\$1,002.66</b>
Strap Assembly .....	A52437-9 .....	<b>\$197.19</b>
Control Mast Rudder Arm .....	F52040 .....	<b>\$106.65</b>
Mast Support .....	F52047 .....	<b>\$608.85</b>
Control Mast Assembly .....	F52057 .....	<b>\$876.73</b>
Trim Control Wire .....	F52070-33 .....	<b>\$48.72</b>
Control Column .....	F52118 .....	<b>\$1,335.50</b>

Control Shaft Assembly.....	F52129	<b>\$1,427.75</b>
Control Column Base Assembly.....	F52135	<b>\$242.33</b>
Mooney Terminal.....	F52165	<b>\$94.00</b>
Elevator Control Assembly.....	F52245	<b>\$400.46</b>
Bellcrank Assembly.....	F52297	<b>\$567.58</b>
Aileron Bellcrank Assembly.....	F52305	<b>\$555.01</b>
Bellcrank Bracket, Left.....	F52307-L	<b>\$736.39</b>
Right.....	F52307-R	<b>\$736.39</b>
Rudder Pedal Shaft.....	F52460-3	<b>\$35.54</b>
Rod Assembly With Stud.....	F52479-9	<b>\$112.45</b>

**Pushrods**

Pushrod Assembly.....	415-52022	<b>\$318.54</b>
Pushrod.....	415-52023	<b>\$107.15</b>
Pushrod.....	415-52024	<b>\$114.48</b>
Pushrod, Socket Type.....	415-52035	<b>\$225.76</b>
Pushrod Assembly.....	415-52036	<b>\$225.76</b>
Pushrod.....	415-52038	<b>\$192.29</b>
Pushrod, Less Ends.....	F52034	<b>\$205.38</b>
Elevator Pushrod.....	F52039	<b>\$92.53</b>

**Fairleads**

Fairlead.....	415-52226	<b>\$4.32</b>
Fairlead.....	415-52227	<b>\$6.07</b>
Fairlead.....	415-52237	<b>\$4.32</b>
Fairlead.....	415-52247	<b>\$6.35</b>
Fairlead.....	415-52278	<b>\$11.72</b>
Fairlead.....	415-52397	<b>\$64.97</b>
Fairlead Assembly.....	415-52397A	<b>\$225.37</b>
Fairlead.....	F52056	<b>\$9.71</b>

**Control Cables**

Cable descriptions are basic. Please consult your parts manual for application.



Throttle Control Cable.....	415-51048	<b>\$362.87</b>
Starter Control Cable.....	415-51052	<b>\$31.68</b>
Brake Control Cable.....	415-51065	<b>\$179.52</b>
Mixture Control Cable.....	415-51070	<b>\$31.68</b>
Mixture Control Cable.....	415-51104	<b>\$88.04</b>
Carburetor Heat Control Cable.....	415-51105	<b>\$144.56</b>
Throttle Control Cable.....	415-51138	<b>\$361.21</b>
Quadrant Cable.....	415-52172-S	<b>\$140.68</b>
Elevator Control Cable.....	415-52225	<b>\$277.41</b>
Elevator Trim Cable.....	415-52268	<b>\$86.56</b>
Rudder Pedal Control Cable.....	415-52398	<b>\$100.34</b>
Rudder Cable.....	415-52423	<b>\$99.58</b>
Alon Starter Control Cable.....	A51401-5	<b>\$182.96</b>
Starter Control Cable.....	F51106	<b>\$366.64</b>
Throttle Control Cable, Vernier Type.....	F51320	<b>\$184.53</b>
Throttle Control Cable, Friction Lock.....	F51320-1	<b>\$253.14</b>
Rudder Cable.....	F52482	<b>\$88.93</b>
Rudder Cable.....	F52483	<b>\$88.93</b>

**Electrical System**

<b>Description</b>	<b>Part #</b>	<b>Price</b>
Plate Extension.....	415-54043	<b>\$51.12</b>
Master Switch Plate.....	415-54045	<b>\$6.07</b>
Master Switch Guard.....	415-54047	<b>\$33.60</b>
Light Assembly, Left.....	415-54101-L	<b>\$554.92</b>
Right.....	415-54101-R	<b>\$554.92</b>
Shield.....	415-54102-02	<b>\$14.87</b>
Shield.....	415-54102-03	<b>\$14.87</b>
Light Housing Assembly, Left.....	415-54102-L	<b>\$394.58</b>
Right.....	415-54102-R	<b>\$394.58</b>
Bulb Ring.....	415-54103-01	<b>\$75.23</b>
Harness Landing Light.....	415-54104	<b>\$85.22</b>
Alon Light Fairing.....	A17-3	<b>\$35.44</b>
Beacon Lens, Red.....	B12-4	<b>\$36.88</b>
Landing Light Lens.....	F14099	<b>\$85.80</b>

**Wiring**

Ignition Wire Assembly.....	F54048-11	<b>\$12.13</b>
Wire Assembly, Junction Box to Wing, Right.....	F54048-14	<b>\$17.03</b>
Ground Wire, Wing Light, Left.....	F54048-18	<b>\$4.32</b>
Ground Wire, Wing Light, Right.....	F54048-19	<b>\$4.32</b>
Ground Wire, Tail Light.....	F54048-20	<b>\$7.79</b>
Wire Assembly.....	F54048-27	<b>\$12.67</b>
Wire Assembly.....	F54048-29	<b>\$11.96</b>
Wire Assembly.....	F54048-30	<b>\$11.96</b>
Wire Assembly.....	F54048-72	<b>\$17.03</b>

**Wing Landing Light Lens**

- Clear
- |             |                |
|-------------|----------------|
| F14099..... | <b>\$85.80</b> |
|-------------|----------------|



**Clear Tail Cone Lens**

- For new style tail cone
- |                 |                |
|-----------------|----------------|
| 470011-013..... | <b>\$99.75</b> |
|-----------------|----------------|



**Battery Box**

Battery Box, with Extended Sides (Excludes Lid).....	415-54035	<b>\$392.67</b>
Battery Box Assembly.....	F54070	<b>\$928.55</b>
Battery Box Wing Bolt Assembly.....	415-54037	<b>\$26.40</b>
Battery Box Cover, with Rubber Seal.....	415-54040	<b>\$373.40</b>
Battery Box Cover.....	415-54075	<b>\$241.84</b>
Battery Box Top.....	F54094	<b>\$183.64</b>
Battery Box Decal.....	415-54062	<b>\$13.30</b>



**Concorde Batteries**

- Valve regulated sealed lead acid batteries



**Ercoupe 415 Series, Forney, Alon, Mooney M-10**

12 Volt, 22 Amp Hour ..... RG-25 ..... **\$294.95**

**Mooney M20, M20A thru K**

12 Volt, 33 Amp Hour, Extra Capacity ..... RG-35AXC ..... **\$403.00**

**Engine • Cowling**

Description	Part #	Price
Strap Tube Baffle.....	415-40198 .....	<b>\$3.64</b>
Rear Head Strap .....	415-40406 .....	<b>\$47.26</b>
Front Head Strap.....	415-40407 .....	<b>\$55.61</b>
Front Barrel Strap.....	415-40412 .....	<b>\$34.50</b>
Rear Barrel Strap.....	415-40413 .....	<b>\$21.01</b>
Lever Assembly.....	415-40431 .....	<b>\$9.54</b>
Strap Assembly.....	415-40457 .....	<b>\$84.78</b>
Strap Assembly.....	415-40459 .....	<b>\$91.51</b>
Inlet Assembly.....	415-40474 .....	<b>\$175.59</b>
Oil Cooler Scoop.....	415-40480 .....	<b>\$320.57</b>
Right Side Scoop.....	415-40486 .....	<b>\$20.94</b>
Chafe Strip .....	415-40523-29 .....	<b>\$1.24</b>
Heater Box Air Control Guide.....	415-40528 .....	<b>\$5.32</b>
Winter Front Plate Assembly.....	415-40554-S .....	<b>\$142.94</b>
Flex Tube, Baffle to Cabin Heater.....	415-40572 .....	<b>\$84.54</b>
Starter Cable Support Bracket.....	415-40591 .....	<b>\$20.69</b>
Oil Pressure Tube.....	415-47016 .....	<b>\$60.50</b>
Oil Gauge Tube.....	415-47116 .....	<b>\$31.15</b>
Cabin Heat Box Assembly.....	F40074 .....	<b>\$293.11</b>
Alon/Mooney Strap.....	F40400-89 .....	<b>\$14.29</b>
Cowl Chafe Strip.....	F40532-9 .....	<b>\$23.87</b>
Lower Longitudinal.....	F40558-6 .....	<b>\$57.98</b>
Oil Access Door.....	F40560-1 .....	<b>\$173.90</b>
Right Front Baffle.....	F40569 .....	<b>\$71.12</b>
Alon/Mooney Carburetor Air Box.....	F40672 .....	<b>\$872.84</b>
Oil Gauge Tube Assembly.....	F47117 .....	<b>\$30.64</b>
Oil Pressure Hose.....	F48201-1 .....	<b>\$80.49</b>
Carburetor Hose.....	F48201-4 .....	<b>\$62.46</b>
Oil Breather Hose.....	F48201-5 .....	<b>\$19.39</b>

**Cowling Nameplate**

While they last!

- Aluminum
- Red with black lettering
- Approximately 10 inches wide by 7 inches tall



Left Side Nameplate..... 415-00012 ..... **\$66.93**  
 Right Side Nameplate ..... 415-00011 ..... **\$66.93**

**Cowling**

Upper Longitudinal, Left.....	415-40038-L .....	<b>\$258.84</b>
Right.....	415-40038-R .....	<b>\$258.84</b>
Bottom Longitudinal, Left.....	415-40047-L .....	<b>\$208.97</b>
Right.....	415-40047-R .....	<b>\$208.97</b>
Side Cowl Gusset.....	415-40245 .....	<b>\$21.95</b>
Cowl Cover Plate .....	415-40252 .....	<b>\$97.41</b>
Lower Longitudinal.....	A40558 .....	<b>\$107.15</b>
Upper Longitudinal, Left.....	F40035-L .....	<b>\$263.04</b>
Right.....	F40035-R .....	<b>\$263.04</b>
Forney Bottom Cowl.....	F40079 .....	<b>\$1,069.50</b>
Alon Bottom Cowl Assembly.....	F40079A .....	<b>\$1,369.97</b>
Longitudinal, Camloc, Left.....	F40558-L .....	<b>\$209.14</b>
Right.....	F40558-R .....	<b>\$209.14</b>
Side Cowl Door Stiffener, Left.....	F40036-L .....	<b>\$114.44</b>
Right.....	F40036-R .....	<b>\$114.44</b>

**Aluminum Nose Cowl Assembly**

Without Cold Air Intake Hole (Pictured)  
 415-40451..... **\$1,395.99**  
 With Cold Air Intake Hole  
 415-40460..... **\$1,477.44**



**Top Cowl**

For S/N 1 to 2622 ..... 415-40422 ..... **\$917.84**  
 For S/N 2623 and up ..... F40532 ..... **\$917.84**



**Bottom Cowl**

• Less cover plate  
 415-40040 ..... **\$989.62**



**Side Cowl Assembly**

Side Cowl, DZUS Fasteners  
 Right..... 415-40090-R .. **\$1,115.12**  
 Left..... 415-40090-L .. **\$1,115.12**  
 Side Cowl, CAMLOC Fasteners  
 Right..... F40559-R ..... **\$856.61**  
 Left..... F40559-L ..... **\$856.61**



**Spark Plug Fairings**



Mooney

Ercoupe

Mooney Fairing, 17" long ..... F40253 ..... **\$118.27**  
 Ercoupe Fairing, 14.75" long ..... 415-40428 ..... **\$136.32**

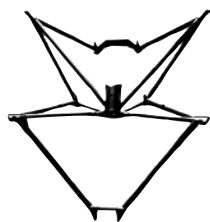
**Baffles**

Baffle Rocker.....	415-40058.....	<b>\$87.65</b>
Rocker Baffle Assembly.....	415-40066.....	<b>\$12.76</b>
Baffle Assembly.....	415-40070.....	<b>\$13.18</b>
Baffle.....	415-40076.....	<b>\$5.89</b>
Baffle.....	415-40169.....	<b>\$49.73</b>
Side Baffle, Left.....	415-40174-L.....	<b>\$14.90</b>
Right.....	415-40174-R.....	<b>\$14.90</b>
Side Baffle, Right.....	415-40404.....	<b>\$181.64</b>
Head Filler Baffle.....	415-40411.....	<b>\$16.84</b>
Rear Baffle, Left.....	415-40473.....	<b>\$630.05</b>
Baffle.....	415-40483.....	<b>\$56.73</b>
Baffle.....	415-40484.....	<b>\$52.72</b>
Baffle.....	415-40488.....	<b>\$428.24</b>
Baffle.....	415-40525.....	<b>\$18.78</b>
Front Baffle, Left.....	415-40526.....	<b>\$33.15</b>
Baffle.....	415-40597.....	<b>\$39.43</b>
Baffle.....	415-40598.....	<b>\$39.43</b>
Baffle Assembly.....	415-40599.....	<b>\$267.34</b>
Baffle Assembly.....	F40461.....	<b>\$450.49</b>
Baffle.....	F40461-9.....	<b>\$22.15</b>
Baffle.....	F40462.....	<b>\$99.61</b>
Baffle.....	F40465-1.....	<b>\$161.62</b>
Oil Cooler Baffle, Left.....	F40485.....	<b>\$39.43</b>
Side Baffle, Left.....	F40405.....	<b>\$168.78</b>
Oil Sump Baffle Gusset, Left.....	F40487-L.....	<b>\$441.04</b>
Right.....	F40487-R.....	<b>\$441.04</b>
Top Baffle, Left.....	F40496.....	<b>\$129.16</b>
Baffle.....	F40496-3.....	<b>\$62.33</b>
Top Baffle, Right.....	F40497.....	<b>\$126.01</b>
Baffle.....	F40504.....	<b>\$265.38</b>
Baffle Seal.....	F40504-13.....	<b>\$20.26</b>
Baffle.....	F40635.....	<b>\$281.82</b>

**Ercoupe Engine Mount**

- Applicability: All Ercoupe 415 series
- Supersedes part number 415-31920

F31920..... **\$3,405.52**



**Engine Mount Bushings**

- For C series Continentals
- Rubber
- Priced and sold individually

U22387A..... **\$6.18**



**Air Filter Screen**

**Paper Type • For 415 Series**

Filter Screen.....415-40585-1..... **\$104.05**

**Foam Type • For 415 Series**

Filter Element..... BA-8805..... **\$10.34**

Filter Assembly..... BA-8810..... **\$53.88**



**Carburetor Induction Manifold**

Continental A-65, C-75, C-85, and C-90 Engines  
U35145..... **\$426.51**

Continental O-200 Engine  
U35145-A1..... **\$566.33**



**Frame Tank Filler Neck Grommet**

• Rubber  
F40430..... **\$24.72**



**Nose Cowl Mounting Rings**

Mounting Ring For DZUS Fastener Cowl  
(S/N 1 to 2623)..... 415-40244D .. **\$1,064.15**

Mounting Ring For CAMLOC Fastener Cowl  
(S/N 2624 and up).....415-40244C .. **\$1,064.15**

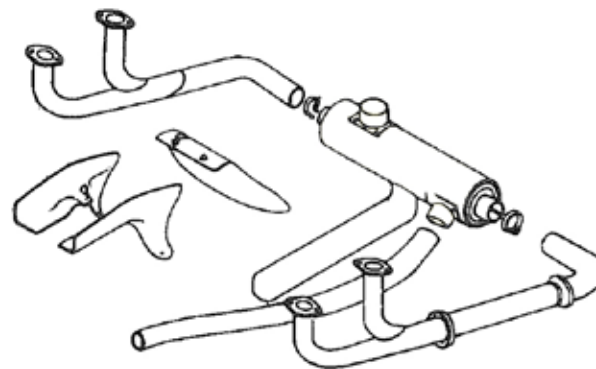
Engine Cowling Nose Mount Assembly  
(S/N 2623 and up).....415-40255 .. **\$696.28**



**Exhaust System**

**Exhaust System**

- Applicability: Ercoupe 415 series and early Forney



Muffler Attach Clamp.....	415-40167.....	<b>\$108.93</b>
Ercoupe Heat Muff Assembly.....	415-40478.....	<b>\$20.86</b>
Ercoupe Muffler.....	415-40511-1.....	<b>\$1,068.82</b>
Ercoupe Heat Shroud.....	415-40515.....	<b>\$339.18</b>
Ercoupe Inlet Assembly.....	415-40516.....	<b>\$80.57</b>
Ercoupe Plate.....	415-40516-2.....	<b>\$2.74</b>
Ercoupe Coupling Assembly.....	415-40519.....	<b>\$102.56</b>
Ercoupe Carburetor Heat Shroud Assembly.....	415-40520.....	<b>\$271.88</b>
Alon Shroud.....	A40708.....	<b>\$253.51</b>
Exhaust Stack, Left.....	U-415-40401-S.....	<b>\$1,213.78</b>
Right.....	U-415-40402-S.....	<b>\$1,213.78</b>

# Frame

Description	Part #	Price
Forward Lower Skin	415-31007-1	\$681.17
Upper "B" Frame	F31009	\$94.08
Frame "E" Bracket	F31012-2	\$1.43
Frame Assembly "F"	415-31013	\$508.95
Frame Assembly "G"	415-31014	\$123.22
Frame Assembly "H"	F31015	\$97.16
Frame Assembly "I"	F31016	\$106.92
Frame Assembly "J"	F31017	\$119.33
Frame Assembly "K"	F31018	\$159.86
External Longeron, Left	F31019-L	\$334.16
Right	F31019-R	\$334.16
Frame Inner Skin Assembly	415-31035	\$379.65
Tail Cone Fairing Assembly	F31039	\$1,288.30
Windshield Trim Cover	415-31041	\$203.35
Frame Lower Control Support, Left	415-31044-L	\$82.80
Right	415-31044-R	\$82.80
Frame Upper Control Support, Left	415-31045-L	\$93.21
Right	415-31045-R	\$93.21
Frame Rear Top Skin Stiffener	415-31046	\$561.33
Reinforcement Angle	415-31052-7	\$84.11
Reinforcement Angle	415-31052-8	\$120.23
Bottom Skin Former, Left	415-31054-L	\$12.33
Right	415-31054-R	\$12.33
Upper Firewall Fitting, Left	415-31062-L	\$225.08
Right	415-31062-R	\$225.08
Lower Firewall Fitting, Left (F31063-L)	600264-L00	\$251.48
Right	F31063-R	\$251.48
Antenna Support	F31068	\$8.32
Engine Top Cowl Support Bumper	F31076	\$6.80
Frame Channel	415-31089	\$46.56
Stiffener	415-31091-1	\$7.28
Stiffener	415-31091-2	\$7.28
Bottom Tail Cone Skin	415-31092	\$534.00
Side Tail Cone Skin, Left	415-31093-1L	\$578.16
Right	415-31093-1R	\$578.16
Top Tail Cone Skin	415-31094	\$554.12
Lower Firewall Skin (Skin Only)	415-31099-1	\$193.28
Lower Frame "B" (415-31100)	415-31100-1	\$230.54
Lower Half Frame "C"	415-31101	\$541.19
Support, Left	415-31105-L	\$36.03
Right	415-31105-R	\$36.03
Frame "A" to "C" Lower Stiffener, Left	F31106-L	\$266.35
Right	F31106-R	\$266.35
Frame "A" to "B" Lower Longitudinal, Left	415-31107-L	\$148.89
Right	415-31107-R	\$148.89
Frame "A" to "B" Stiffener, Left	415-31108-L	\$16.38
Right	415-31108-R	\$16.38
Frame "A" to "C" Stiffener, Left	F31109-L	\$80.37
Right	F31109-R	\$80.37
Frame "A" to "B" Upper Longitudinal, Left	415-31110-L	\$36.53
Right	415-31110-R	\$36.53
Frame "A" to "C" Upper Longitudinal, Left	415-31111-L	\$462.24

Right	415-31111-R	\$462.24
Gas Tank Support, Left	415-31112-L	\$106.09
Right	415-31112-R	\$106.09
Stiffener Assembly, Left	F31113-L	\$30.47
Right	F31113-R	\$30.47
Frame "E" to "F" Lower Stiffener, Left	F31114-L	\$38.91
Right	F31114-R	\$38.91
Frame "D" to "F" Upper Stiffener, Left	415-31115-L	\$31.39
Right	415-31115-R	\$31.39
Frame "E" to "F" Upper Stiffener, Left	415-31116-L	\$31.39
Right	415-31116-R	\$31.39
Frame Tank Brace, Left	415-31118-L	\$9.49
Right	415-31118-R	\$9.49
Lower Firewall Reinforcement	415-31125	\$19.55
Firewall Reinforcement	415-31126	\$7.28
Windshield Weatherstrip, 65 inch	415-31130	\$35.68
Rear Window Sealing Rubber, 48 inch	F31131-1	\$32.66
Top Windshield Sealing Rubber	F31131-2	\$40.69
Frame Fuel Tank Sealing Rubber	F31131-3	\$29.02
Frame "E" to "F" Lower Stiffener, Left	F31133-L	\$47.87
Right	F31133-R	\$47.87
Gas Gauge Bracket	415-31137	\$4.85
Frame "D" Upper Support	415-31142	\$90.47
Attaching Bracket, Left	F31143-L	\$13.70
Right	F31143-R	\$13.70
Frame "D" Assembly (without Upper Support 31142)	F31144	\$1,044.24
Upper Channel, Left	F31145-L	\$114.39
Right	F31145-R	\$114.39
Front Window Track Channel, Left	415-31146-L	\$51.12
Right	415-31146-R	\$51.12
Channel, Left	415-31147-L	\$59.44
Right	415-31147-R	\$59.44
Front Windshield Frame	415-31150	\$246.40
Frame "D" Upper Splice Plate	415-31152	\$3.54
Floor Support	415-31154	\$56.40
Bottom Skin	F31160-1	\$80.37
Side Skin, Left	F31160-2-L	\$600.69
Right	F31160-2-R	\$600.69
Frame Rear Top Skin	F31160-3	\$1,408.13
Junction Box (31160-17)	40099	\$7.76
Floor Assembly Support	415-31163	\$14.41
Floor Support	415-31169	\$133.94
Fitting Assembly, Left	415-31184-L	\$71.71
Right	415-31184-R	\$71.71
Mounting Bracket	415-31187	\$7.30
Plate (31194)	415-31194-L	\$121.40
Windshield Strip Assembly	415-31204	\$238.02
Trim Crank Nameplate (S/N 1623 to 4423)	415-31211	\$43.47
Plate	415-31212	\$179.63
Panel to "B" Panel Brace	415-31228	\$15.57
Frame "A" to "C" Upper Longitudinal	415-31229	\$84.76
Upper to Lower Firewall Stiffener	F31235-1	\$46.21
Panel to Frame Tank Panel Brace	F31237	\$10.22
Front Frame Upper Felt Pad	415-31238	\$5.80
Panel to Firewall Throttle Brace	F31239	\$88.76
Throttle to Brace Throttle Clamp	415-31241	\$50.32
Rear Section Upper Front Frame Skin	F31245-1	\$214.17



Frame "A" to "C" Side Skin, Left.....	F31245-2-L.....	<b>\$611.85</b>
Right.....	F31245-2-R.....	<b>\$611.85</b>
Forward Section Upper Front Frame Skin.....	F31245-5.....	<b>\$372.87</b>

**Ercoupe Firewall**

- Stainless steel

415-31078 ..... **\$1,350.98**



**Fuel System**

Part descriptions below are basic. Please consult your aircraft parts manuals or our website for exact make, model and serial number applicability.

<b>Description</b>	<b>Part #</b>	<b>Price</b>
Mooney Fuel Cap and Gasket, Thermos Type.....	610014-001.....	<b>\$83.21</b>
Alon Fuel Gauge, 6 Hole.....	610189-003.....	<b>\$221.08</b>
Fuselage Tank Back Pad.....	415-31124-5.....	<b>\$10.34</b>
Fuselage Tank Pad Set.....	415-31124-S.....	<b>\$86.44</b>
Engine Primer Jet Nipple.....	415-40565-2.....	<b>\$145.75</b>
Fuel Gauge Sight Tube.....	415-48011.....	<b>\$231.70</b>
Sight Tube Gasket.....	415-48016.....	<b>\$3.60</b>
Filler Neck.....	415-48033-1.....	<b>\$19.04</b>
Strainer.....	415-48055.....	<b>\$29.81</b>
Fuel Gauge Float.....	415-48057-1.....	<b>\$24.03</b>
Rear Support Tube.....	415-48076.....	<b>\$57.98</b>
Fuel Shut-Off Shaft and Handle Assembly.....	415-48078-1.....	<b>\$288.64</b>
Front Support Tube.....	415-48096.....	<b>\$72.51</b>
Gauge Ring.....	415-48113.....	<b>\$4.85</b>
12 Hole Fuel Gauge.....	415-48114.....	<b>\$376.45</b>
Fuel Float Dial.....	415-48136.....	<b>\$287.17</b>
Fuel Gauge Dial.....	415-48137.....	<b>\$27.34</b>
Fuel Cap and Float Assembly.....	415-48186.....	<b>\$160.26</b>
Gascolator Bracket.....	415-48308-001.....	<b>\$44.06</b>

**Tube Assemblies**

Tube Assembly, Left to Right Tank.....	415-48060.....	<b>\$71.74</b>
Tube Assembly, Wing Tank to Firewall.....	415-48061.....	<b>\$119.19</b>
Tube Assembly, Fuel Tank to Right Tank.....	415-48062.....	<b>\$19.02</b>
Tube Assembly, Frame Tank to Firewall.....	415-48063.....	<b>\$26.28</b>
Tube Assembly, Firewall to Frame Tank Return.....	415-48064.....	<b>\$16.57</b>
Tube Assembly, Primer to Firewall.....	415-48068.....	<b>\$17.03</b>
Wing Gauge Vent Tube.....	415-48089.....	<b>\$21.91</b>
Tube Assembly, Union to Firewall.....	415-48090.....	<b>\$30.57</b>
Fuel Tank to Tee Tube Assembly, Right.....	415-48109.....	<b>\$94.25</b>
Tee to Shut-Off Tube Assembly.....	415-48110.....	<b>\$23.87</b>
Tank Overflow Tube, Frame Tank to Left Tank.....	415-48131.....	<b>\$47.13</b>
Tank Tube Assembly, Firewall to Frame Tank.....	415-48132.....	<b>\$26.28</b>
Overflow Tube Assembly, Frame Tank to Fitting.....	415-48133.....	<b>\$20.72</b>
Overflow Tube Assembly, Fitting to Left Tank.....	415-48134.....	<b>\$34.06</b>

Fuel Tank to Tee Tube Assembly, Right.....	415-48155.....	<b>\$18.71</b>
Tee to Tee Interconnecting Tube Assembly.....	415-48159.....	<b>\$213.20</b>
Tee to Elbow Overflow Tube Assembly.....	415-48161.....	<b>\$18.53</b>
Tee to Elbow Overflow Tube Assembly.....	415-48162.....	<b>\$95.63</b>
Frame Shut-Off to Firewall Tube Assembly.....	415-48163.....	<b>\$47.13</b>
Firewall to Frame Tank Tube Assembly.....	415-48164.....	<b>\$49.90</b>
Union to Firewall Tube Assembly.....	415-48165.....	<b>\$25.31</b>
Reducer to Elbow Service Line.....	415-48175.....	<b>\$15.09</b>
Reducer to Left Wing Tank Service Line.....	415-48176.....	<b>\$22.88</b>
Forward Side of Frame "D" to Frame Tank Service Line..	415-48177.....	<b>\$23.87</b>
Tube Assembly, Cut-Off to Union.....	415-48188.....	<b>\$16.79</b>
Left Tank to Union Overflow Tube.....	415-48194.....	<b>\$179.74</b>

**Welded 9 Gallon Wing Fuel Tanks**

- Applicability: Forney, Alon, and Mooney M-10 models with gauge in left tank

Left Tank (48147) ... 610182-501..... **\$3,279.26**  
 Right Tank..... 610182-503..... **\$3,372.51**



**Fuel Caps for 9 Gallon Tanks**

Fuel Cap, with Breather Hole..... 415-48073..... **\$97.86**  
 Fuel Cap, Unvented (S/N 4424 and up)..... F48183..... **\$63.64**

**6 Gallon Frame Fuel Tanks**

- Please call our sales department prior to ordering

Ercoupe, S/N 2623 and up  
 U-415-48145..... **\$2,660.40**  
 Forney, Alon  
 A48301..... **\$2,350.68**  
 Mooney M-10 Cadet  
 610181-501..... **\$2,201.48**



**Fuel Tank Strainer**

To be used in the fuselage tank outlet. This little strainer measures 3/8 inch in diameter and 1 7/8 inches long. It has brass end fittings that measure 5/16 inch in outside diameter up to the collar, which has a 7/16 inch outside diameter.



Fuel Tank Strainer..... 415-48081-1..... **\$25.71**



**Univair aircraft parts  
 have been made in  
 the U.S.A. since 1946**

## Instruments • Gauges

Description	Part #	Price
Switch Plate .....	415-51029 .....	<b>\$14.56</b>
Instrument Panel Trim Strip .....	415-51045 .....	<b>\$42.87</b>
Compass Card .....	415-51061 .....	<b>\$2.91</b>
Compass Card Cover .....	415-51062 .....	<b>\$1.94</b>
Ignition Switch Plate.....	415-51080 .....	<b>\$4.83</b>
Throttle Catch Barrel .....	415-51098 .....	<b>\$194.80</b>
Throttle Catch Disc .....	415-51099 .....	<b>\$45.88</b>
Trim Panel.....	415-51125 .....	<b>\$10.73</b>
Bottom Overlay .....	415-51133 .....	<b>\$54.75</b>
Navigation Light Nameplate .....	415-51135 .....	<b>\$13.37</b>
Compass Card Assembly.....	415-51140 .....	<b>\$16.32</b>
Ignition Switch Plate.....	415-51142 .....	<b>\$9.71</b>
Instrument Panel Overlay, 6 Holes .....	415-51174 .....	<b>\$300.08</b>

### Blank Instrument Panel

- Applicability: Serial numbers up to 4424



#### Modernize your Ercoupe panel!

Lay out your own instrument and radio arrangement using the Univair blank instrument panel which has locating holes only for the two control columns. FAA field approval required.

Blank Instrument Panel ..... 415-51081-B ..... **\$493.90**

## Landing Gear

Description	Part #	Price
Piston End Assembly.....	415-33109 .....	<b>\$47.23</b>
Main Gear Oleo Strut Piston Cup .....	415-33119 .....	<b>\$43.55</b>
Knee Joint Shaft.....	415-33128 .....	<b>\$141.66</b>
Tapered Attach Washer .....	415-33132 .....	<b>\$36.29</b>
Main Gear Upper Leg Assembly, Left.....	415-33144-L .....	<b>\$318.63</b>
Right.....	415-33144-R .....	<b>\$318.63</b>
Main Gear Knee Joint Stud.....	415-33155 .....	<b>\$12.57</b>
Main Gear Oleo Strut Piston Assembly.....	415-33164 .....	<b>\$424.64</b>
Main Landing Gear, Left.....	415-33167-L .....	<b>\$1,842.60</b>
Right.....	415-33167-R .....	<b>\$1,909.97</b>
Main Gear Lower Leg Assembly, Left.....	415-33175-L .....	<b>\$512.66</b>
Right.....	415-33175-R .....	<b>\$512.66</b>
Knee Joint Pin .....	415-33209 .....	<b>\$339.32</b>
Oleo Strut Fairing .....	415-33211 .....	<b>\$118.02</b>
Main Gear Wheel Axle Collar.....	415-33214 .....	<b>\$28.77</b>
Main Gear Knee Joint Washer.....	415-33215 .....	<b>\$8.51</b>
Lower Leg Axle Screw .....	415-33217 .....	<b>\$34.47</b>

Main Gear Upper Leg, Left or Right.....	415-33220 .....	<b>\$552.88</b>
Oil Hole Cover.....	415-33229-2 .....	<b>\$1.67</b>
Upper Fairing Spacer.....	415-33306 .....	<b>\$5.14</b>
Lower Fairing Spacer.....	415-33307 .....	<b>\$5.14</b>
Upper Scissor Link.....	415-34043 .....	<b>\$443.50</b>
Complete Nutcracker Assembly.....	415-34059 .....	<b>\$72.87</b>
Taxi Spring .....	415-34104 .....	<b>\$27.31</b>
Axle Spacer on Nose Gear.....	415-34106 .....	<b>\$70.23</b>
Nosewheel Axle .....	415-34107 .....	<b>\$67.90</b>
Nose Gear Wheel Assembly, Less Bearing .....	415-34200-302 .....	<b>\$278.06</b>
Fork Assembly.....	415-34355 .....	<b>\$847.83</b>
Nose Fork Axle .....	415-34356 .....	<b>\$128.83</b>
Knee Joint Lock Nut .....	F33201-18 .....	<b>\$7.28</b>
Main Landing Gear, Left.....	F33201-L .....	<b>\$1,909.97</b>
Right.....	F33201-R .....	<b>\$1,909.97</b>
Lower Leg, Left.....	F33203-L .....	<b>\$512.66</b>
Right.....	F33203-R .....	<b>\$512.66</b>
Lower Leg and Axle Assembly, Left.....	F33204-L .....	<b>\$653.41</b>
Right.....	F33204-R .....	<b>\$653.41</b>
Main Landing Gear Axle.....	F33205 .....	<b>\$99.52</b>
Upper Leg Assembly, Left.....	F33221-L .....	<b>\$552.88</b>
Right.....	F33221-R .....	<b>\$552.88</b>
Knee Axle Bolt Lock Pin.....	F33222 .....	<b>\$6.57</b>
Oleo Strut Piston Assembly.....	F33226 .....	<b>\$415.03</b>
Inner Cylinder Assembly.....	F34305 .....	<b>\$1,030.82</b>
Piston Assembly.....	F34423 .....	<b>\$27.65</b>
Nose Gear Fork Assembly, 500 x 5.....	U34310-1A .....	<b>\$497.84</b>
Nose Gear Support Block.....	U415-34310-2A .....	<b>\$138.82</b>

### Nose Gear Steering Ball

This is the original type steering ball as used on Ercoupe, Forney and Alon.

F34074-2 ..... **\$29.06**



### Landing Gear Shock Pads and Spacers



Current rubber pads are a new, improved compound resulting from research performed for us by our supplier. This material has superior weathering qualities. It is unaffected by hydraulic fluid and has greater resistance to static load.

- Pads and spacers are priced and sold individually

Shock Pad (8 required per plane) ..... 415-33115 ..... **\$10.60**  
 Oleo Strut Cylinder Spacer, S/N 813 and up  
 (14 required per plane) ..... 415-33224 ..... **\$18.29**

### Main Landing Gear Fairings

- Serial numbers 813 and up

Main Landing Gear Fairings  
 Left..... 415-33210-L..... **\$171.64**  
 Right..... 415-33210-R..... **\$171.64**

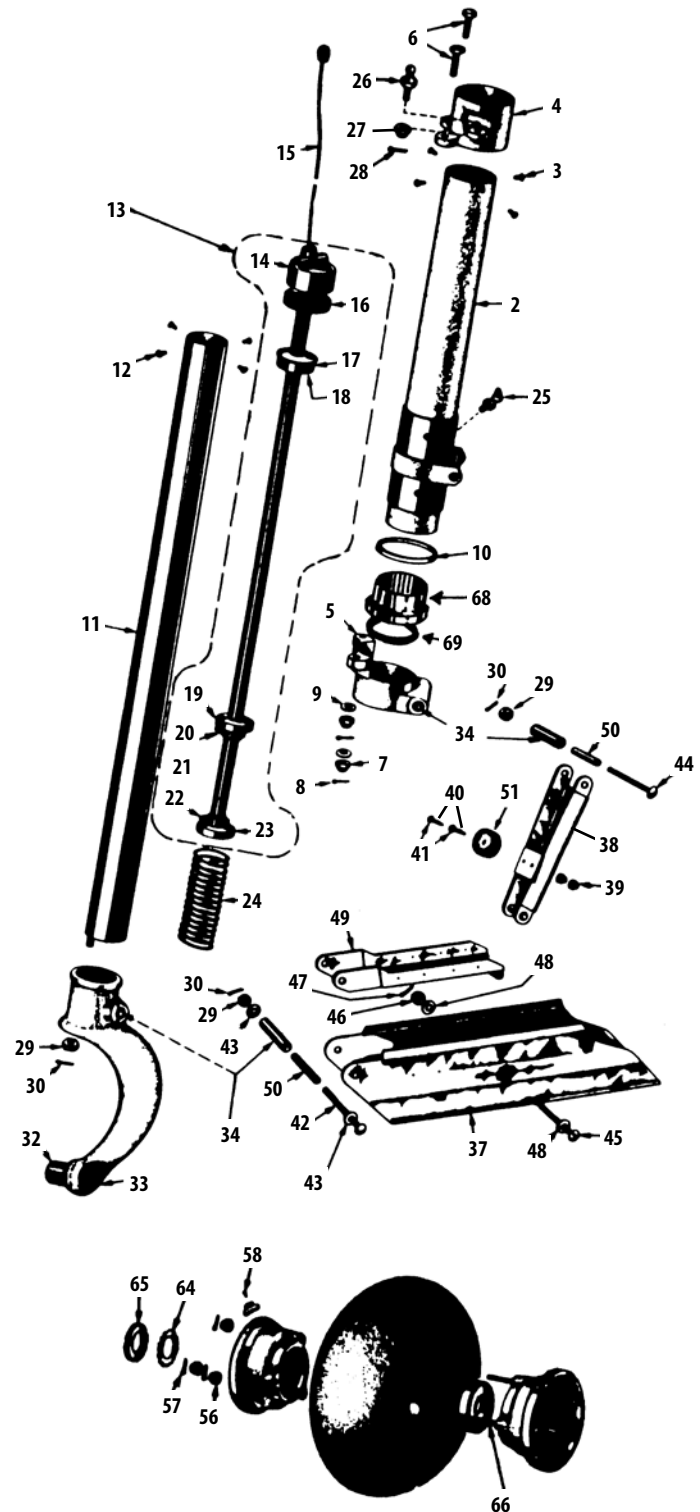


## Ercoupe Steel Nose Gear Parts List

- Applicability: Serial numbers 187 to 4500
- See page 39 for SK-31 series nose gear service kits
- If you need parts for the Electrol or Universal Aircraft Industries nose gear, call Univair for price and availability

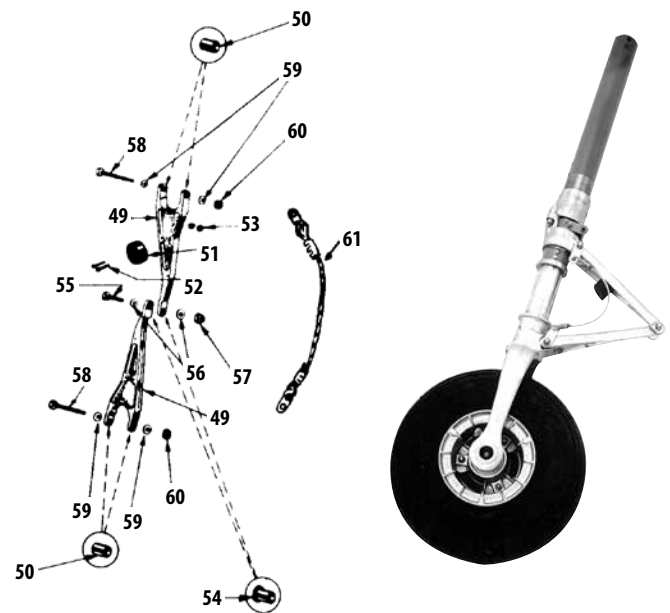
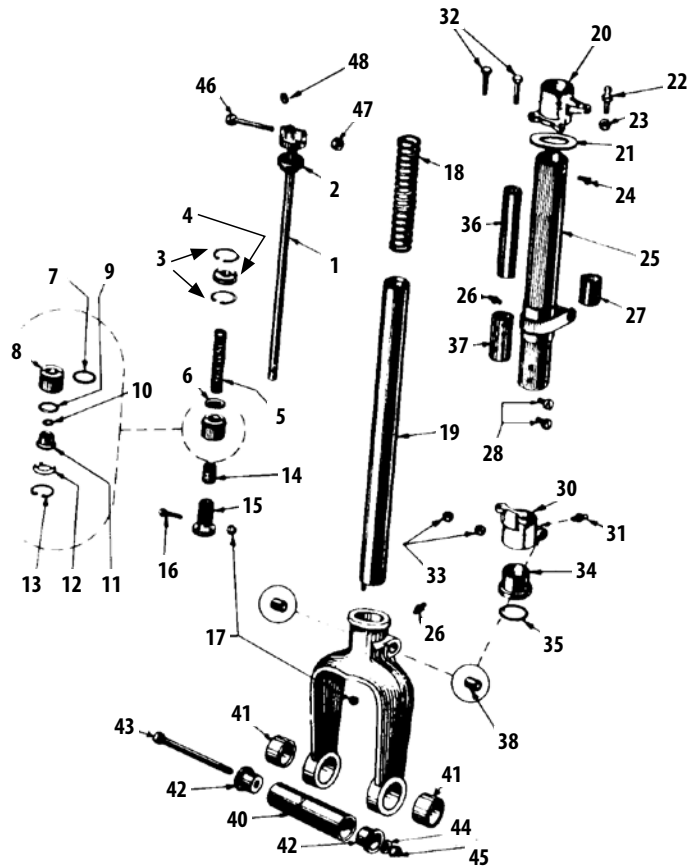
#	Description	Part#	# Req'd	Price
	Wheel Assembly, Less Bearing .....	415-34200-302	1	\$278.06
2	Outer Oleo Strut Assembly .....	415-34080	1	\$1,042.88
3	Screw .....	AN510-10R4	4	\$0.60
4	Oleo Strut Steering Collar .....	F34029	1	\$263.56
5	Oleo Strut Steering Sleeve .....	415-34057	1	\$783.10
6	Collar Bolt .....	AN4-13	2	\$0.68
7	Castle Nut, Sleeve to Collar .....	AN310-4	2	\$1.34
8	Cotter Pin .....	AN380-2-2	2	\$0.03
9	Washer (AN960-416L) .....	NAS1149F0432P	2	\$0.04
10	Washer .....	F34051	1	\$18.76
11	Oleo Strut Inner Cylinder Assembly .....	415-34130	1	\$1,030.82
12	Screw (AN510-6R4) .....	MS35191-235	4	\$3.06
13	Oleo Strut Piston Assembly .....	415-34126-5	1	\$1,086.60
14	Cylinder Rod and Head Assembly .....	415-34099-2	1	\$638.62
15	Oleo Strut Gauge Assembly .....	415-34089	1	\$26.05
16	Oleo Strut Piston Shock Absorber .....	415-34087	1	\$11.24
17	Oleo Strut Piston Oil Seal Support .....	415-34129	1	\$258.08
18	Oleo Strut Piston Oil Seal .....	415-34126-1	1	\$24.57
19	Oleo Strut Piston Support Flange .....	415-34128	1	\$56.45
20	Nut (AN365-1032) .....	MS21044N3	2	\$0.20
21	Bolt .....	AN3-11A	2	\$0.22
22	Washer (AN960-10L) .....	NAS1149F0332P	2	\$0.04
23	Oleo Strut Piston Orifice Fitting .....	415-34127	1	\$94.18
24	Oleo Strut Spring .....	F34041	1	\$28.03
25	Lubrication Fitting (34085-10) .....	1637-B	1	\$2.43
26	Steering Joint Ball Fitting .....	F34074-2	1	\$29.06
27	Nut .....	AN310-6	1	\$1.00
28	Cotter Pin (AN380-3-3) .....	MS24665-283	1	\$0.04
29	Nut .....	AN320-4	3	\$1.36
30	Cotter Pin .....	AN380-2-2	3	\$0.03
32	Wheel Axle .....	415-34111	1	\$347.16
33	Axle Snap Ring .....	415-34096-1	1	\$1.97
34	Nutcracker Phenolic Bushing .....	415-34042	1	\$48.81
37	Nutcracker Fairing .....	415-34020	1	\$97.07
38	Upper Nutcracker Link Assembly .....	415-34043	1	\$443.50
39	Nut (AN365-632) .....	MS21044N06	2	\$0.32
40	Screw .....	AN515-6R10	2	\$0.24
41	Washer (AN960-6) .....	NAS1149FN632P	2	\$0.06
42	Bolt .....	AN24-40	1	\$21.00
43	Washer (AN960-416L) .....	NAS1149F0432P	2	\$0.04
44	Bolt .....	AN4-23	1	\$0.41
45	Bolt .....	AN24-40	1	\$21.00
46	Nut .....	AN320-4	1	\$1.36
47	Pin Cotter .....	AN380-2-2	1	\$0.03
48	Washer (AN960-416L) .....	NAS1149F0432P	2	\$0.04
49	Lower Nutcracker Link Assembly .....	415-34019	1	\$462.56
50	Steel Nutcracker Bushing .....	415-34134	2	\$68.39
51	Rubber Nutcracker Bumper .....	415-34094	1	\$38.10
56	Nut .....	AN310-4	3	\$1.34

57	Cotter Pin .....	AN380-2-2	3	\$0.03
58	Type "A" Slotted Screw .....	4X1/4-PRA-SS	A/R	\$0.02
64	Nutcracker Phenolic Bushing .....	415-34042	1	\$48.81
65	Lock Washer .....	415-34110-3	1	\$2.74
66	Wheel Bolt .....	AN4-33A	3	\$1.04
68	Inner Lower Bushing .....	415-34133	1	\$201.38
69	O-Ring (AN6227-31) .....	MS28775-328	1	\$0.74
70	Scissors Modification Kit (Not Shown) .....	SK-17F	1	\$1,288.30



## SK-17 Nose Gear Assembly Parts List

#	Description	Part #	# Req	Price
1	Shaft Assembly with Head	F34420	1	\$462.24
2	Shock Absorber	F34325	1	\$69.38
3	Snap Ring	NAS50-165	2	\$1.43
4	Shaft Guide	F34343	1	\$58.97
5	Spring	F34342	1	\$11.23
6	Washer (AN960D1016)	NAS1149D1063H	1	\$0.72
7	O-Ring (AN6227-20)	MS28775-215	1	\$1.14
8	Inner Plug	F34316	1	\$172.90
9	O-Ring (AN6227-25)	MS28775-220	1	\$0.78
10	O-Ring (AN6227-12)	MS28775-114	1	\$0.46
11	Collar Plug	F34332	1	\$56.67
12	Washer	F34345	1	\$23.99
13	Snap Ring (415-34351-1)	MS16625-2143	1	\$0.49
14	Stop	F34344	1	\$6.96
15	Orifice Fitting	F34317	1	\$52.72
16	Bolt	AN4-11A	1	\$0.32
17	Nut	AN364-428	1	\$0.16
18	Spring	F34041	1	\$28.03
19	Inner Cylinder Assembly	F34305	1	\$1,030.82
20	Steering Collar	F34029	1	\$263.56
21	Washer	F34051	1	\$18.76
22	Socket Ball	F34074-2	1	\$29.06
23	Nut (AN364-624)	MS21083N6	1	\$1.05
24	Screw	AN510-10R4	2	\$0.60
25	Outer Cylinder	F34410	1	\$1,115.83
26	Lube Fitting	1637-B	1	\$2.43
27	Upper Inner Bushing	F34412	1	\$92.79
28	Screw Lock	F34214	4	\$15.68
30	Steering Sleeve	F34431	1	\$406.55
31	Lube Fitting	1641B	1	\$1.30
32	Bolt	AN4-14A	2	\$0.30
33	Nut (AN365-428)	MS21044N4	2	\$0.28
34	Lower Outer Bushing	F34411	1	\$199.01
35	O-Ring (AN6230-3)	MS28775-225	1	\$0.68
36	Upper Spacer Tube	F34417	1	\$72.71
37	Lower Spacer Tube	F34416	1	\$55.58
38	Bushing	NAS75-5-026	4	\$9.00
-	Wheel 5.00 x 5	040-08700	1	\$1,095.63
-	Tire 5.00 x 5	500X5T4AT	1	\$86.91
-	Tube 5.00 x 5	500X5U	1	\$95.90
40	Axle Shaft	F34373	1	\$168.37
41	Spacer	F34374	2	\$38.69
42	Socket Bushings	F34372	2	\$68.05
43	Bolt	AN4-55A	1	\$10.00
44	Washer (AN960-416)	NAS1149F0463P	1	\$0.05
45	Nut (AN365-428)	MS21044N4	1	\$0.28
46	Bolt	AN5-26	2	\$1.14
47	Nut	AN310-5	1	\$1.56
48	Plug (AN913-15)	MS20913-15	1	\$7.90
49	Scissors Link	F34318	2	\$348.56
50	Bushing (415-34313)	NAS75-5-008	4	\$5.88
51	Rubber Bumper	F34309	1	\$26.62
52	Screw (AN515-6-20)	MS35206-235	2	\$0.20
53	Nut (AN365-632)	MS21044N06	2	\$0.32



54	Bushing	F34339	2	\$19.42
55	Bolt	AN5-11	1	\$0.68
56	Washer (AN960-516)	NAS1149F0563P	2	\$0.08
57	Nut	AN310-5	1	\$1.56
58	Bolt	AN5-26	2	\$1.14
59	Washer (AN960-516)	NAS1149F0563P	4	\$0.08
60	Nut	AN310-5	2	\$1.56
61	Snub Cable	530062-000	1	\$74.21



**Belleville Spring**

- For Ercoupe main landing gear
- Replaces 33115 rubber shock pads
- 14 required per aircraft
- Priced and sold individually



F33251..... \$107.28

**Ercoupe Steering Pushrod Boot and Doubler Ring**

Made to fit original Ercoupe oval hole which is 1½ inch wide and 1<sup>13</sup>/<sub>16</sub> inch high. Holes larger than original will need 720082-000 doubler ring installed for correct boot fit.



Pushrod Boot      Doubler Ring

Pushrod Boot .....415-31058..... **\$50.19**  
 Doubler Ring.....720082-000..... **\$11.79**

**Cleveland Wheels & Brakes Conversion Kits**

**Ercoupe Conversion Kits**

- Serial numbers 813 and up
- STC approved

199-06900..... **\$4,190.32**

- Serial numbers 113 to 812
- FAA field approval required

199-07100..... **\$2,802.89**



**Shop Online at [www.univair.com](http://www.univair.com)**

**Propellers**

Univair furnishes a bolt kit with each propeller purchase. Bolt kits can also be purchased separately from our website.

Propeller descriptions below show basic aircraft/engine model applicability. Check manufacturer's websites for exact applicability before purchasing, or contact our sales staff at 1-888-433-5433 and we can research it for you.

Please note that we do not stock all of the propellers listed. Non-stocked items may have up to a 6 week lead time.

**McCaughey Aluminum Fixed-Pitch Propellers**

415 Series, F-1, A-2, M-10, Continental C-85, C-90..... CM7148 ..... **\$4,728.80**  
 415 Series, F-1, A-2, M-10, Continental C-85, C-90..... CM7150 ..... **\$4,728.80**  
 F-1, 415 Series, Continental C-90..... CM7152 ..... **\$4,728.80**  
 415 Series, Continental A-65, C-75 ..... CM7351 ..... **\$4,728.80**  
 415 Series, Continental A-65..... CM7441 ..... **\$4,728.80**  
 415 Series, Continental A-65..... CM7443 ..... **\$4,870.66**  
 415 Series, Continental A-65..... CM7445 ..... **\$4,728.80**  
 415D, Continental O-200..... DCM6948 ..... **\$5,505.97**

**Sensenich Aluminum Propellers**

415 Series, Continental O-200..... 69CK-0-52 ..... **\$4,480.50**  
 415 Series, Continental C-85 ..... 76AK-2-46 ..... **\$4,956.50**  
 415 Series, Continental C-75, C-85 ..... 76AK-2-48 ..... **\$4,580.50**

**Sensenich Wood Propellers**

415 Series, Continental C-85, C-90 ..... W72GK50-CUB ..... **\$3,125.00**  
 415C, Continental A-65 ..... W72CK42-SB ..... **\$2,465.00**  
 415 Series, Continental C-85, C-90 ..... W72GK50-SB ..... **\$3,125.00**  
 415C, Continental A-65 ..... W72CK42 ..... **\$2,430.00**  
 415C, Continental A-65 ..... W72CK44 ..... **\$2,430.00**  
 415 Series, Continental C-85 ..... W72GK48 ..... **\$3,090.00**  
 415 Series, Continental C-85, C-90 ..... W72GK50 ..... **\$3,090.00**

**Service Kits & Assemblies**

Below are listed our most popular service kits for Ercoupe airplanes. You can find all our service kits on our website in the Ercoupe section.

**SK-1 Rudder Bellcrank Modification Kit**

- Eliminate the possibilities of a rudder bellcrank seizure caused by moisture in the bushing
- As per AD 67-06-03 and Alon Service Bulletin 14

Modification Kit .....SK-1 ..... **\$57.49**

**SK-4 Trim Tab Control Conversion Kit**

- This kit employs a movable section on the trailing edge of the elevator
- As per Ercoupe Service Memorandum 38
- Does not include tab for 415 series
- See our website for list of parts included in this kit

Conversion Kit .....SK-4 ..... **\$1,033.14**

**SK-7 Fuel Pump Modification Kit**

- Complies with AD 47-20-03 (Ercoupe Service Memo 42)
- Includes elbow, grommet and button plug
- See website for full parts list

Modification Kit .....SK-7 ..... **\$132.12**

**SK-8 Battery Box Modification Kit**

- Modification reduces the possibility of acid entering the fuselage structure if spilled within the box
- As per Ercoupe Service Bulletin 22
- Includes service decal, rubber pads, extension plate, and rivets

Modification Kit .....SK-8 ..... **\$106.27**



### SK-9 Rear Spar Reinforcement Kit

- Modification will help prevent damage to the rear spar due to hard landings and rough usage
- As per Ercoupe Service Memo 53A and AD 59-05-04
- Includes stiffener and necessary installation hardware

Reinforcement Kit .....SK-9 ..... **\$106.43**

### SK-12 Battery Box Modification Kit

- Converts battery box from large to small battery
- Includes spacers, screws, and installation drawing

Modification Kit .....SK-12 ..... **\$103.41**

### SK-14 Trim Tab Stop and Springs Kit

- Complies with AD 50-07-01
- Purpose: To preclude the possibility of elevator flutter in the event the elevator trim tab control wire fails

Service Kit .....SK-14 ..... **\$62.04**

### SK-15 Bubble Windshield Kit

Clear vision without distortion! This double curvature windshield will stop aggravating rain leaks and offers an appreciable amount of soundproofing. It can be installed on older Ercoupes and comes complete with installation kit.



Clear.....SK-15 ..... **\$1,121.82**  
Tinted..... SK-15A ..... **\$1,323.83**

### SK-17F Nose Gear Scissors Modification Kit

Replaces the welded scissors used on the steel gear, serial numbers 183 to 4424, with forged aluminum scissors. Scissors are machined to fit the steel gear, and the kit includes all necessary bolts and bushings for installation. FAA field approval required.

Service Kit .....SK-17F ..... **\$1,288.30**

### SK-17G Upper Nose Gear Cylinder Assembly

Consists of outer cylinder, lower bushing, inner bushing, inner and lower sleeves, upper and lower outer collar, rod and head, and shim. This assembly may be used to replace the worn out upper cylinder assemblies on all Ercoupes, serial numbers 4425 and up, and early Forneys.

Service Kit ..... SK-17G ..... **\$3,011.68**

**If you don't find the part you need, be sure to give us a call. We are here to help you with all of your classic aircraft needs!**

### SK-21 Rudder Pedal Kit

The rudders are completely disengaged from the aileron system and therefore independent of the lateral controls, allowing the airplane to be flown in slips, and misuse of the rudder pedals can be demonstrated in flight. It is not necessary to use the rudder pedals in excess of 70 miles per hour, due to the efficiency of the aileron system. Visit our website for a complete list of all parts included in this kit.



Rudder Pedal Kit .....SK-21 ..... **\$1,875.31**

### SK-28 Landing Lights Installation Kit

The Ercoupe Landing Light System is supplied complete with two lights, one for each main landing gear fairing, and wiring with terminals installed for connecting these lights to switches which are provided. Instructions for installation and a wiring diagram are also included.

Landing Lights Kit .....SK-28 ..... **\$1,397.32**

### SK-31 Nose Gear Service Kits

- See our website for complete list of parts included in each kit

For steel gear; less bronze bushing ..... SK-31-LB ..... **\$356.58**  
For steel gear; with bronze bushing.....SK-31-WB ..... **\$533.39**  
For Electrol gear; less bronze bushing.....SK-31A-LB ..... **\$326.32**  
For Electrol gear; with bronze bushing.....SK-31A-WB ..... **\$412.22**  
For late Forney and Alon; less bronze bushing..... SK-31B-LB ..... **\$309.84**  
For late Forney and Alon; with bronze bushing.....SK-31B-WB ..... **\$509.53**  
For Mooney M-10; less bronze bushing..... SK-31C-LB ..... **\$228.82**  
For Mooney M-10; with bronze bushing.....SK-31C-WB ..... **\$475.51**

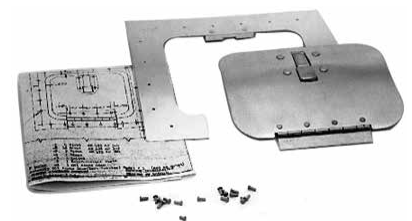
### SK-33 Oil Door Kits

#### Small Oil Door Kit

SK-33 ..... **\$372.42**

Size: 4<sup>15</sup>/<sub>16</sub> x 6<sup>1</sup>/<sub>4</sub> inches.

Complete kit with instructions and hardware. Provides access to oil filler without the necessity of opening the cowl on pre-flight checks.



#### Large Oil Door Kit

SK-33A ..... **\$232.73**

Size: 9<sup>5</sup>/<sub>8</sub> x 12 inches. Same as the SK-33 Kit above, but provides for a larger door. Door fastens with two easy-to-use, wing-type fasteners.



**SK-35 Belleville Spring Kit**

- Smoother ride on rough fields, better taxiing control, reduces “pitch” (less wear to nose gear parts), reduces wing “oil canning” on ground. Reduces landing shock, affords added protection to rear spar, raises tail to proper level.
- Kit consists of 14 Belleville springs (complete for both gears), new O-rings, spacers, flanges and installation instructions.

Belleville Spring Kit.....SK-35 .....**\$1,511.50**

**SK-36 Rudder Rib Kit**

- Increases strength of the rudder at the control horn attachment
- As per AD 59-25-05 and Service Bulletin 105
- Provides parts for both sides

Service Kit.....SK-36 .....**\$320.69**

**SK-37 Frame Drain Installation Kit**

- For the addition of drain holes in all Ercoupes, Aircoupes, and Fornaires up to serial number 5714
- Kit includes 4 clam shell cover plates and 12 rivets
- As per Service Bulletin #109

Installation Kit .....SK-37 .....**\$47.60**

**SK-38 Oil Breather Tube Re-Routing Kit**

- Re-routes the oil breather line to empty oil vapors directly outside the airplane at rearward region of the belly cowl
- For Ercoupes up to serial number 5715
- As per Fornaire Service Bulletin #108

Re-Routing Kit .....SK-38 .....**\$402.78**

**SK-39 Fuel System Drain Modification Kit**

- Provides for effective drainage of the fuselage tank and wing tanks by the use of quick drain fixtures
- As per Service Bulletin #111
- For serial numbers 113 to 5714



Modification Kit .....SK-39.....**\$402.78**

**SK-46 Anti-Ice Deflector Kit**

- Eliminate icing between aileron and wing center section
- For all models 415 through Mooney Cadets
- As per Alon Bulletin #7

Deflector Kit.....SK-46 .....**\$30.62**

**SK-49 Fuel Filler Neck Modification Kit**

- To prevent fuel flowing from the vented fuel-filler caps during flight
- As per Alon Bulletin #16, section I, step 4
- Kit includes shield, double, seal, rivets, tube of sealant

Modification Kit .....SK-49 .....**\$69.63**

**SK-50 Fuel Filler Cap Frame Tank Kit**

- To prevent fuel flowing from the vented fuel-filler caps during flight
- As per Alon Bulletin #16, section II, step 1
- Kit includes gasket

Service Kit.....SK-50 .....**\$29.86**

**SK-51 Wing Tank Fuel Cap Modification Kit**

- To prevent fuel flowing from the vented fuel-filler caps during flight
- As per Alon Bulletin #16, section II, step 2
- Kit includes 2 fuel caps

Modification Kit .....SK-51 .....**\$116.93**

**SK-52 Wing Tank Fuel Cap Modification Kit**

- To prevent fuel flowing from the vented fuel-filler caps during flight
- As per Alon Bulletin #16, sections I, II, and III
- Kit includes 2 fuel caps

Modification Kit .....SK-52 .....**\$243.46**

**SK-56 Alon Tail Cone Kit**

Streamline your Ercoupe with the new style Alon Tail Cone. Facilitates installation of tail mounted strobe. Gives your Ercoupe that new look.

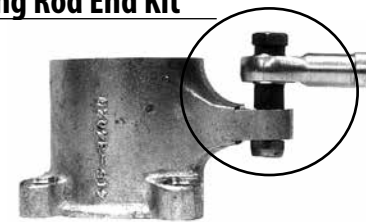


SK-56 .....**\$1,629.04**

**SK-57 Improved Steering Rod End Kit**

- This unit replaces part number 415-34074-2 ball stud
- Steering collar not included

This kit consists of rod end bearing and all necessary hardware. It is FAA approved for all Ercoupe, Forney, Alon and M-10, when purchased from Univair. For use with the part number 52035 pushrod that has the male threaded stud.



Improved Steering Rod End Kit .....SK-57 .....**\$167.21**

**SK-76 Gascolator Support Service Kits**

- All SK-76 service kits comply with Service Bulletin 24B



**Gascolator Support Service Kit for Ercoupe**

**415-C, 415-CD, 415-D, 415-E, 415-G ..... SK-76..... \$202.03**  
Includes brass nipple and elbow, braces and necessary hardware for aircraft with Bendix Stromberg carburetors.

**Gascolator Support Service Kit**

**for Forney F-1 and F-1A** ..... SK-76F..... **\$340.96**  
Includes brass nipple and elbow, braces and necessary hardware. This kit is also applicable on 415 series Ercoupes with Marvel-Schebler (Precision) carburetors.

**Gascolator Support Service Kit**..... SK-76G..... **\$491.97**  
Same as the SK-76 Kit, but includes a new aluminum gascolator with quick drain for aircraft requiring gascolator replacement, for aircraft using Bendix Stromberg carburetors.

**Gascolator Support Service Kit**..... SK-76FG..... **\$489.04**  
Same as the SK-76F Kit, but includes a new aluminum gascolator with quick drain for aircraft requiring gascolator replacement, for 415 series Ercoupes and Forneys with Marvel-Schebler (Precision) carburetors.

**SK-80 Service Kits**

**Service Bulletin 31 – Method 1 Service Kit** for aircraft with smooth center section bottom skins.

SK-80-1 ..... **\$394.25**

**Service Bulletin 31 – Method 1 Service Kit** for aircraft with beaded center section bottom skins.

SK-80-2 ..... **\$348.56**



**Spinners**

**Spinners and Components**

Any of the following combinations may be used on Ercoupe, Forney, Alon or Mooney. However, you must select the proper assembly for your particular propeller and crankshaft combination. NOTE: The use of the later style Mooney spinners on the earlier Ercoupe/Forney models will require an FAA 337 approval.



**A) For Use With Metal Propellers**

Dome ..... F40594 ..... **\$434.77**  
Front Bulkhead ..... A40665-8 ..... **\$128.83**  
Rear Bulkhead for Flanged Crankshaft ..... F40663-00 ..... **\$354.55**  
Rear Bulkhead for Tapered Crankshaft ..... F40663-01 ..... **\$417.79**

**B) For Use With Wood Propellers**

Dome ..... F40593 ..... **\$525.37**  
Rear Bulkhead for Flanged Crankshaft ..... 415-40592-2 ..... **\$213.36**  
Rear Bulkhead for Tapered Crankshaft ..... 415-40592-1 ..... **\$271.35**

**C) New Style Spinner For Use With Metal Propellers on Alon/Mooney**

Dome ..... 680030-001 ..... **\$571.82**  
Front Bulkhead ..... 680029-004 ..... **\$133.94**  
Rear Bulkhead for Flanged Crankshaft ..... F40663-00 ..... **\$354.55**  
Rear Bulkhead for Tapered Crankshaft ..... F40663-01 ..... **\$417.79**

**Ercoupe Propeller Bolts**

- 6 bolts required per aircraft
- Priced and sold individually

**McCauley Metal Propeller**

Bolt Kit for Flanged Crankshaft (6 bolts plus washers).... UB4622-9 ..... **\$158.00**  
Bolts for Tapered Crankshaft ..... AN6-34A ..... **\$1.20**

**Flottorp Wood Propeller**

Bolts for Flanged Crankshaft ..... AN6H42A ..... **\$6.00**  
Bolts for Tapered Crankshaft ..... AN6-42 ..... **\$4.30**

**Tail Section**

**Stabilizer Parts**



Horizontal Stabilizer Assembly.....415-21001 ...**\$11,498.64**  
Stabilizer Front Beam..... F21002 ..... **\$79.65**  
Stabilizer Rear Beam  
    For Ercoupe 415-C through 415-G .....415-21003 ..... **\$352.91**  
    For Forney S/N 5640 and up, all Alon..... F21003 ..... **\$362.62**  
#2 Rib.....415-21005 ..... **\$30.18**  
#1 Nose Rib.....415-21006 ..... **\$28.97**  
#2 Nose Rib.....415-21007 ..... **\$28.97**  
#3 Nose Rib.....415-21008 ..... **\$28.97**  
#4 Nose Rib.....415-21009 ..... **\$28.97**  
Hinge Fitting Assembly, Left .....415-21011-L ..... **\$25.81**  
    Right.....415-21011-R ..... **\$29.31**  
#3 Rib.....415-21012 ..... **\$30.18**  
Attach Fitting, Left ..... F21013-L ..... **\$69.25**  
    Right.....F21013-R ..... **\$69.25**  
Accessory Door, Left .....415-21014-L ..... **\$15.09**  
    Right.....415-21014-R ..... **\$15.09**  
Forward Attach Fitting..... F21015 ..... **\$65.75**  
Upper Stabilizer Skin (Skin Only).....415-21022-1 ..... **\$280.17**  
Leading Edge Skin, Left..... F21025-L ..... **\$310.12**  
    Right.....F21025-R ..... **\$310.12**

Lower Skin, Left .....	415-21028-1-L .....	<b>\$184.93</b>
Right.....	415-21028-1-R .....	<b>\$184.93</b>
Horizontal Stabilizer, Mooney M-10 .....	420002-001 .....	<b>\$5,015.03</b>

**Elevator Parts**



Ercoupe Split Elevator, for 415-E (S/N 4482 and up),  
415-G, Forney F-1, F-1A, Alon A-2, A-2A ..... 415-22037 ..... **\$3,162.95**

Ercoupe Elevator (S/N 1 to 1622) ..... 415-22001 ..... **\$3,510.54**

Elevator Beam..... F22002 ..... **\$205.11**

End Hinge ..... 415-22007 ..... **\$59.34**

Center Hinge ..... 415-22008 ..... **\$121.78**

Trailing Edge (415-22011)  
(For use on airplanes with trim tabs only)..... 415-22023 ..... **\$25.79**

Horn Assembly..... 415-22016 ..... **\$27.80**

Elevator Horn Bushing (Oilite), A304-16 ..... 415-22016-1 ..... **\$3.15**

Upper Elevator Skin (skin only) ..... 415-22019-1 ..... **\$304.31**

Trim Tab Hinge ..... 415-22026 ..... **\$198.71**

Trim Tab Assembly (model 415-C)..... 415-22027 ..... **\$251.62**

Trim Tab Horn..... 415-22028 ..... **\$3.15**

Trim Tab Assembly (models 415-CD and 415-D) ..... 415-22031 ..... **\$359.12**

Trim Tab Assembly (model 415-E)..... 415-22032 ..... **\$97.41**

Trim Tab Hinge (model 415-E) ..... F22033 ..... **\$78.05**

Trim Tab Spring (model 415-E) (22035) ..... SK-288 ..... **\$10.73**

Upper Skin, Right..... 415-22037-1 ..... **\$70.87**

Left..... 415-22037-2 ..... **\$70.87**

Lower Skin, Right..... 415-22037-3 ..... **\$54.75**

Left..... 415-22037-4 ..... **\$112.42**

Lower Center Skin ..... 415-22037-5 ..... **\$49.13**

Center Rib (415-22037-6) ..... 430040-000 ..... **\$28.31**

Intermediate Rib..... 415-22037-7 ..... **\$30.18**

Center Rib, Left (22037-8-L/R)..... F22043 ..... **\$54.54**

Right (22037-9-L/R)..... F22044 ..... **\$54.54**

Control Arm (22037-14)..... F22047 ..... **\$31.68**

Spar Stiffener (22037-15) ..... F22048 ..... **\$11.91**

Tab Hinge Spacer ..... 415-22037-17 ..... **\$4.32**

Upper Stop Tab..... 415-22037-30 ..... **\$6.57**

Upper Center Skin ..... 415-22037-31 ..... **\$44.32**

Split Elevator Center Hinge ..... F22038 ..... **\$56.91**

Ercoupe Kit (complies with Service Bulletin 35)..... SK-83 ..... **\$123.64**

**“Straight” Elevator Assembly with Trim Tab**

- 1¾” moveable trim tab
- Replacement elevator for C-75 and C-85 powered models
- Applicability: Ercoupe 415-C, CD and -D, serial numbers 113 to 4481
- Please specify serial number when ordering



Elevator Assembly.....	415-22017 .....	<b>\$3,780.29</b>
------------------------	-----------------	-------------------

**Rudder and Fin Parts**



Fin Assembly, Left.....	F23001-L .....	<b>\$963.57</b>
Right.....	F23001-R .....	<b>\$963.57</b>
Rudder Assembly, Left .....	F24001-L .....	<b>\$3,087.24</b>
Right.....	F24001-R .....	<b>\$3,087.24</b>
Mounting Bolt Spacer .....	F24001-17 .....	<b>\$1.94</b>
Rudder Control Horn, Left .....	F24002-L .....	<b>\$206.19</b>
Right.....	F24002-R .....	<b>\$206.19</b>
Hinge Assembly .....	F24003 .....	<b>\$37.02</b>
Rudder Skin,		
Inboard Left, Outboard Right.....	F24013-1-L .....	<b>\$209.83</b>
Inboard Right, Outboard Left.....	F24013-1-R .....	<b>\$209.83</b>
Rib Assembly, Left.....	F24015-L .....	<b>\$96.79</b>
Right.....	F24015-R .....	<b>\$96.79</b>
Rudder Rib Kit (comply with AD 59-25-05).....	SK-36 .....	<b>\$320.69</b>
Rudder (Mooney M-10) .....	460044-001 .....	<b>\$2,728.16</b>
Dorsal Fin (Mooney M-10) .....	350178-000 .....	<b>\$207.83</b>

**Windows • Windshields**

Prices below are for clear windows and windshields only. See our website for prices and availability of Solar Gray and Green tinted versions. Delivery time is 3 weeks from date of order.

**Alon A2, A2A**

Windshield Half, Left.....	A13260-7 .....	<b>\$225.72</b>
Windshield Half, Right .....	A13260-8 .....	<b>\$225.72</b>
Canopy Window .....	A13270-6 .....	<b>\$523.46</b>
Rear Window, Left.....	A13250-53 .....	<b>\$262.10</b>
Rear Window, Right .....	A13250-54 .....	<b>\$262.10</b>

**Ercoupe 415 and Forney**

Windshield, Flat Type (No Holes).....	415-31042 .....	<b>\$214.46</b>
Windshield, Bubble Type.....	F31232 .....	<b>\$476.69</b>
Sliding Window, Right, Complete Assembly.....	415-53023 .....	<b>\$569.18</b>
Sliding Window, Left, Complete Assembly .....	F53024 .....	<b>\$657.11</b>
Sliding Window, Glass Only.....	F53041 .....	<b>\$87.11</b>
Ercoupe Rear Window, Glass Only .....	415-31037 .....	<b>\$70.54</b>
Forney Rear Window, Left or Right.....	F31248 .....	<b>\$74.25</b>

**Mooney M-10 Cadet**

Windshield Half, Left.....	A13260-7 .....	<b>\$225.72</b>
Windshield Half, Right .....	A13260-8 .....	<b>\$225.72</b>
Canopy Window .....	A13270-6 .....	<b>\$523.46</b>
Rear Window, Left.....	310265-019 .....	<b>\$61.63</b>
Rear Window, Right .....	310265-020 .....	<b>\$61.63</b>



# Wings

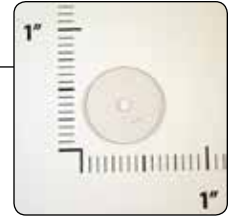
Description	Part #	Price
Pitot Head Support Bracket Assembly.....	415-14043	\$49.03
Pitot Static Line Support Clip .....	F14033	\$9.49
Tip Rear Reinforcement, Left.....	415-14050-L	\$72.03
Right.....	415-14050-R	\$72.03
Tip Skin Reinforcement .....	415-14054	\$5.32
Tip Skin, Left .....	415-14055-1-L	\$106.99
Right.....	415-14055-1-R	\$106.99
Tip Bow Brace Stiffener.....	415-14056	\$4.85
Front Bow Tip Assembly, Left.....	415-14066-L	\$808.42
Right.....	415-14066-R	\$808.42
Leading Edge Skin.....	415-14002-1	\$479.21
Static Pitot Tube .....	415-14002-4	\$140.35
Tip Assembly, Left .....	415-14008-TA-L	\$690.61
Right.....	415-14008-TA-R	\$690.61
Tip Skin, Right.....	415-14012-1R	\$153.74
Rear Beam, Left .....	415-14049-L	\$155.84
Right.....	415-14049-R	\$155.84
Rear Beam Reinforcement, Left .....	415-14049-SA-L	\$33.77
Right.....	415-14049-SA-R	\$33.77
Skin, Left.....	F14077-5-L	\$74.65
Right.....	F14077-5-R	\$74.65
Trailing Edge Skin.....	F14078-1	\$534.74
Leading Edge .....	F14078-2	\$34.08
Leading Edge Skin, Left.....	F14078-4-L	\$852.56
Leading Edge Skin.....	F14078-4-R	\$852.56
Aluminum Navigation Light Bracket .....	F14081	\$194.57
Spring .....	F14093	\$1.76
Plate.....	F14094-7	\$116.33
Mounting Plate .....	F14096	\$156.69
Bracket.....	F14097	\$25.33
Stiffener .....	F14098-1	\$36.58
Landing Light Lens.....	F14099	\$85.80
Pitot Tube .....	F51002	\$315.88
Aileron Bracket, Left.....	F52306-L	\$362.87
Right.....	F52306-R	\$362.87
U-Coupling.....	U-415-40641	\$47.42
Reinforcement, Left .....	415-16017-1-L	\$6.80
Right.....	415-16017-1-R	\$6.80
Stiffener .....	415-16029	\$4.32
Nut.....	415-16030-2	\$0.99
Roller .....	415-16030-41	\$20.72
Plate, Left.....	415-16030-L	\$12.78
Right.....	415-16030-R	\$12.78
Beam Plate.....	415-16039-5	\$18.02
Plate Skin .....	415-16039-6	\$3.95
Stiffener .....	F14098-5	\$36.58
Top Aileron Skin, Left .....	F16034-1-L	\$266.64
Right.....	F16034-1-R	\$266.64

**Free Shipping on Qualifying Orders!**  
**See page 3 for details.**

## Celluloid Washers

• Sold in packs of 100

415-14057 ..... **\$16.42**



## Front Beam Assembly

Front Beam Assembly, Left .....	F14007-L	\$8,544.57
Right.....	F14007-R	\$8,544.57
Tip Only, Left .....	F14029-1L	\$251.29
Right.....	F14029-1R	\$251.29
Diagonal Rib Gusset.....	415-14037	\$10.14
Attach Fitting, Left (14039-L) .....	210348-000	\$349.88
Right (14039-R).....	210349-000	\$349.88
Wing Attach Fitting Spacer .....	415-14040	\$4.65
Upper Inner Rib Gusset, Left .....	415-14041-L	\$5.60
Right.....	415-14041-R	\$5.60
Tip Assembly Flange, Left .....	415-14075-L	\$18.94
Right.....	415-14075-R	\$18.94
Shim .....	415-14067	\$2.47
Gusset, Front Beam to End Rib.....	415-14018	\$2.18

## Rear Beam Assembly

Rear Beam Assembly, Left.....	415-14008-L	\$2,840.42
Right.....	415-14008-R	\$2,840.42
Hinge Assembly, Left .....	415-14020-L	\$79.74
Right.....	415-14020-R	\$79.74
Rear Beam Tip, Left .....	415-14061-L	\$202.55
Right.....	415-14061-R	\$202.55
Outer Diagonal Gusset .....	415-14021	\$2.18
Bow End Rib Gusset, Left .....	415-14022-L	\$2.18
Right.....	415-14022-R	\$2.18
Intermediate Rib Gusset.....	415-14023	\$2.18
Reinforcement Plate .....	415-14008-6	\$21.47
Top Inner End Rib Gusset, Left.....	415-14072-1-L	\$3.44
Right.....	415-14072-1-R	\$3.44
Lower Inner End Rib Gusset, Left.....	415-14072-2-L	\$3.44
Right.....	415-14072-2-R	\$3.44
Splice Plate .....	415-14074	\$3.64

## Ercoupe Wing Metallization STC

STC (excludes aluminum).....STC-SA319WE ..... **\$75.00**

This part requires four 3 x 10 foot sheets of .020" thick aluminum.

Sheet Aluminum, 4 x 12 feet, .020" thickness, sold in full sheets only

Priced per square foot.....2024-T3-.020 ..... **\$6.14**

Additional crating charges apply – see **Order and Shipping Information** in back of catalog for details. More sheet aluminum options can be found in the **Raw Materials** section.



**Aileron Parts**

Aileron Hinge Fitting.....	415-16005	<b>\$34.57</b>
Hinge Fitting.....	415-16005-1	<b>\$33.58</b>
Fitting, Left.....	415-16009-3-L	<b>\$0.99</b>
Fitting, Right.....	415-16009-3-R	<b>\$0.99</b>
Pin.....	415-16009-4	<b>\$0.99</b>
Balance Brace.....	415-16010	<b>\$47.77</b>
Aileron Horn, Left.....	415-16013-L	<b>\$417.55</b>
Right.....	415-16013-R	<b>\$417.55</b>
Trailing Edge.....	415-16016	<b>\$76.54</b>
Beam.....	415-16021-1-L	<b>\$239.93</b>
Beam.....	415-16021-1-R	<b>\$239.93</b>
Upper Tip Skin Assembly, Left.....	415-16022-2-L	<b>\$118.67</b>
Right.....	415-16022-2-R	<b>\$158.72</b>
Aileron Lower Tip Skin Assembly, Left.....	415-16023-1-L	<b>\$181.86</b>
Right.....	415-16023-1-R	<b>\$181.86</b>
Horn Plate, Left.....	415-16025-L	<b>\$26.17</b>
Right.....	415-16025-R	<b>\$26.17</b>
Bow.....	415-16030-45	<b>\$85.22</b>
Rib Assembly.....	415-16037	<b>\$110.58</b>
Aileron Assembly, Left.....	F16001-L	<b>\$2,301.74</b>
Aileron Assembly, Right.....	F16001-R	<b>\$2,301.74</b>
Rib Tip, Left.....	F16002-L	<b>\$19.97</b>
Rib Tip, Right.....	F16002-R	<b>\$19.97</b>
Spar Tip, Left.....	F16024-L	<b>\$125.15</b>
Spar Tip, Right.....	F16024-R	<b>\$122.10</b>
Hinge Fitting Assembly.....	F16031	<b>\$251.62</b>
Upper Skin.....	F16034-1	<b>\$233.57</b>
Skin Assembly.....	F16034-L	<b>\$1,683.10</b>
Skin Assembly.....	F16034-R	<b>\$1,683.10</b>
Aileron Reinforcement.....	F16035	<b>\$32.19</b>
Skin, Left.....	F16038-1-L	<b>\$266.64</b>
Right.....	F16038-1-R	<b>\$266.64</b>
Skin Assembly, Left.....	F16038-L	<b>\$368.65</b>
Right.....	F16038-R	<b>\$368.65</b>

**Ribs**

Inboard Rib, Left.....	F14006-L	<b>\$299.19</b>
Right.....	F14006-R	<b>\$299.19</b>
Outer Diagonal Rib, Left.....	415-14011-L	<b>\$192.04</b>
Right.....	415-14011-R	<b>\$192.04</b>
Outer Tip Former Rib.....	415-14009	<b>\$215.01</b>
Inner Tip Former Rib.....	F14010	<b>\$164.48</b>
Inner Diagonal Rib, Left.....	F14005-L	<b>\$491.36</b>
Right.....	F14005-R	<b>\$491.36</b>
Bow Brace Rib, Left.....	F14019-L	<b>\$91.27</b>
Right.....	F14019-R	<b>\$91.27</b>
Intermediate Nose Rib.....	F14013	<b>\$122.21</b>
Beam Splice Inner Nose Rib.....	F14015	<b>\$60.87</b>
Beam Splice Outer Nose Rib.....	F14058	<b>\$103.08</b>
Bow Skin Splice Nose Rib.....	F14016	<b>\$60.87</b>
Tip Nose Rib, Left.....	415-14017-L	<b>\$144.78</b>
Right.....	415-14017-R	<b>\$144.78</b>
Inboard Nose Rib, Left.....	415-14026-L	<b>\$105.54</b>
Right.....	415-14026-R	<b>\$105.54</b>

Trailing Edge Rib, Left.....	415-14030-L	<b>\$19.09</b>
Right.....	415-14030-R	<b>\$19.09</b>
Intermediate Diagonal Rib, Left.....	F14051-1-L	<b>\$179.35</b>
Right.....	F14051-1-R	<b>\$179.35</b>
Fourth Diagonal Rib, Left.....	F14051-2-L	<b>\$201.28</b>
Right.....	F14051-2-R	<b>\$201.28</b>
Fifth Diagonal Rib, Left.....	F14052-L	<b>\$185.34</b>
Right.....	F14052-R	<b>\$185.34</b>
Inner Rib Angle.....	415-14002-3	<b>\$36.76</b>
Rib Splice Spacer.....	415-14002-2	<b>\$0.99</b>
Rib Bow Tip Assembly, Left.....	415-14012-L	<b>\$842.10</b>
Right.....	415-14012-R	<b>\$842.10</b>
Diagonal Rib, Left.....	415-16033-L	<b>\$23.15</b>
Right.....	415-16033-R	<b>\$23.15</b>
Rib, Left.....	415-16003-L	<b>\$45.05</b>
Right.....	415-16003-R	<b>\$45.05</b>

**Tie Down Eye Bolt**



**FAA-PMA  
APPROVED**

415-14044 ..... **\$10.12**

**Reinforcements**

Reinforcement, Left.....	415-16017-1-L	<b>\$6.80</b>
Right.....	415-16017-1-R	<b>\$6.80</b>
Reinforcement, Left.....	415-16017-2-L	<b>\$6.80</b>
Right.....	415-16017-2-R	<b>\$6.80</b>
Reinforcement, Left.....	415-16017-3-L	<b>\$4.32</b>
Right.....	415-16017-3-R	<b>\$4.32</b>
Reinforcement, Left.....	415-16017-4-L	<b>\$6.80</b>
Right.....	415-16017-4-R	<b>\$6.80</b>
Reinforcement, Left.....	415-16018-1-L	<b>\$6.80</b>
Right.....	415-16018-1-R	<b>\$6.80</b>
Reinforcement, Left.....	415-16018-2-L	<b>\$6.80</b>
Right.....	415-16018-2-R	<b>\$6.80</b>
Reinforcement, Left.....	415-16018-3-L	<b>\$6.80</b>
Right.....	415-16018-3-R	<b>\$6.80</b>
Reinforcement, Left.....	415-16019-1-L	<b>\$6.80</b>
Right.....	415-16019-1-R	<b>\$6.80</b>
Reinforcement, Left.....	415-16019-2-L	<b>\$6.80</b>
Right.....	415-16019-2-R	<b>\$6.80</b>
Reinforcement, Left.....	415-16020-1-L	<b>\$4.32</b>
Right.....	415-16020-1-R	<b>\$4.32</b>
Reinforcement, Left.....	415-16020-2-L	<b>\$6.80</b>
Right.....	415-16020-2-R	<b>\$6.80</b>

**Shop Online:  
www.univair.com**

**Toll Free Sales:  
1-888-433-5433**

