

STINSON 108 SERIES CONTROL SURFACE BALANCE WEIGHT INFORMATION

1. ELEVATOR: P/N 108-1811000 - Stinson Drawing Number 108-2201007 states that P/N 108-2201007-36 lead weight is used on the Left Elevator and P/N 108-221007-38 is used on the Right Elevator. 108-2201007-36 measures .50" X .75" X 1.36". 108-2201007-38 measures .50" X .75" X 2.36". Reference Figures 1 and 2 for additional information. Figure 1 is a portion taken from Stinson Drawing 108-220107 and shows a left hand elevator. The right is opposite.
2. AILERON: P/N 108-1711000 – Stinson Aileron Drawing 108-1711000 states that a lead weight P/N 108-1711000-20 is used for surface balance. It measures .25" X .88" X 8.00". Reference Figures 3 and 4 for additional information.
3. Rudder: 108-2611000 "Small Rudder" used on the 108, 108-1 and 108-2 models use a lead weight that weighs 1.39 lbs. ± .05 lbs.

Rudder 108-2602100 "Large Rudder" is used on the 108-3 models. The redesigned 108-12905 rudder is a direct replacement. Reference the portion of Stinson Drawing 108-12905 included with this information. Reference No. 11 states: "When 108-2602100-20 Mold is filled to the top with lead & 108-2602100-20 block is installed in rudder, the static balance requirement of note 3 will be met."

Note 3 states: "Static unbalance shall not exceed 19.4 in. lbs.

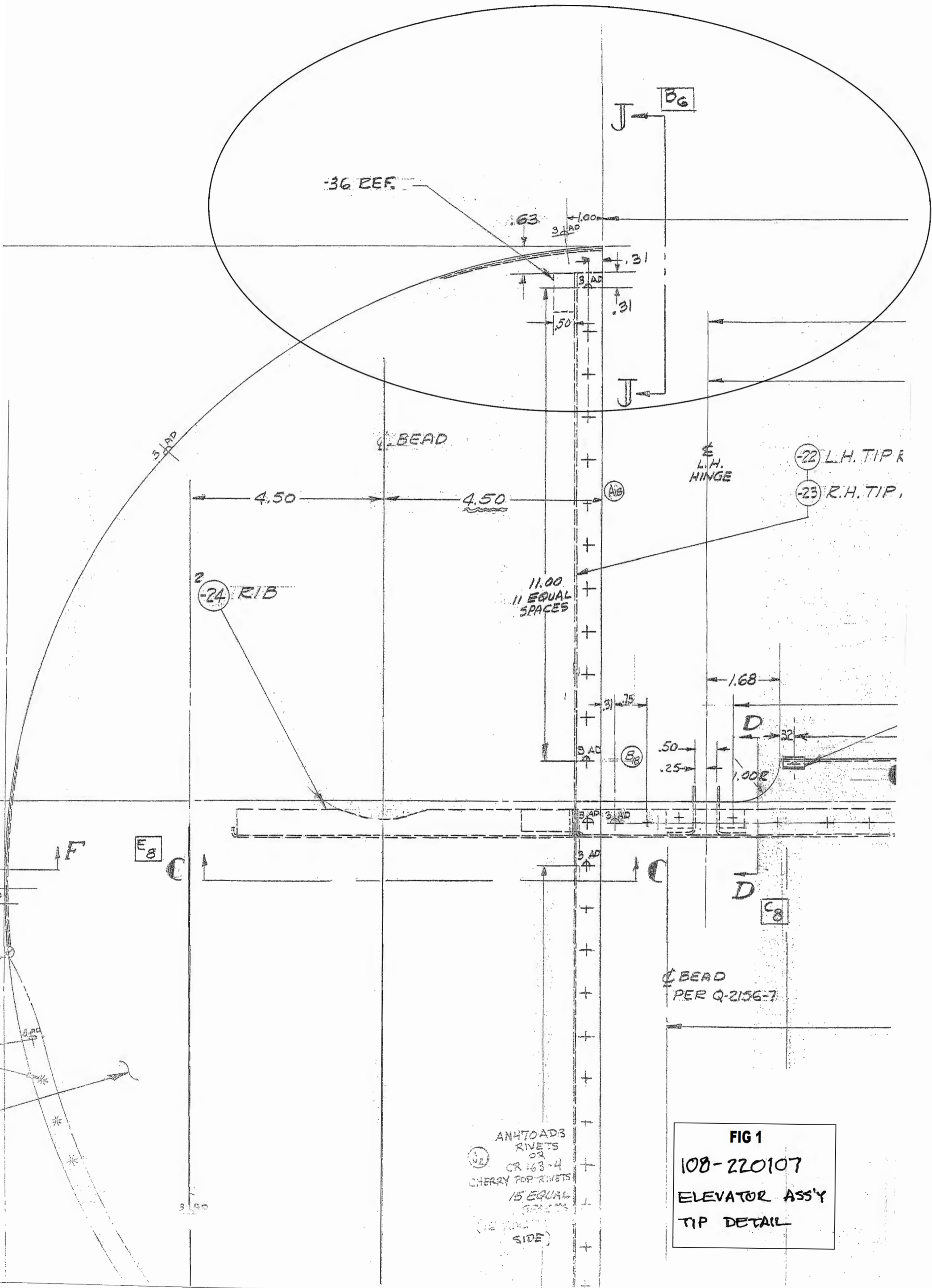


FIG 1
108-220107
ELEVATOR ASS'Y
TIP DETAIL

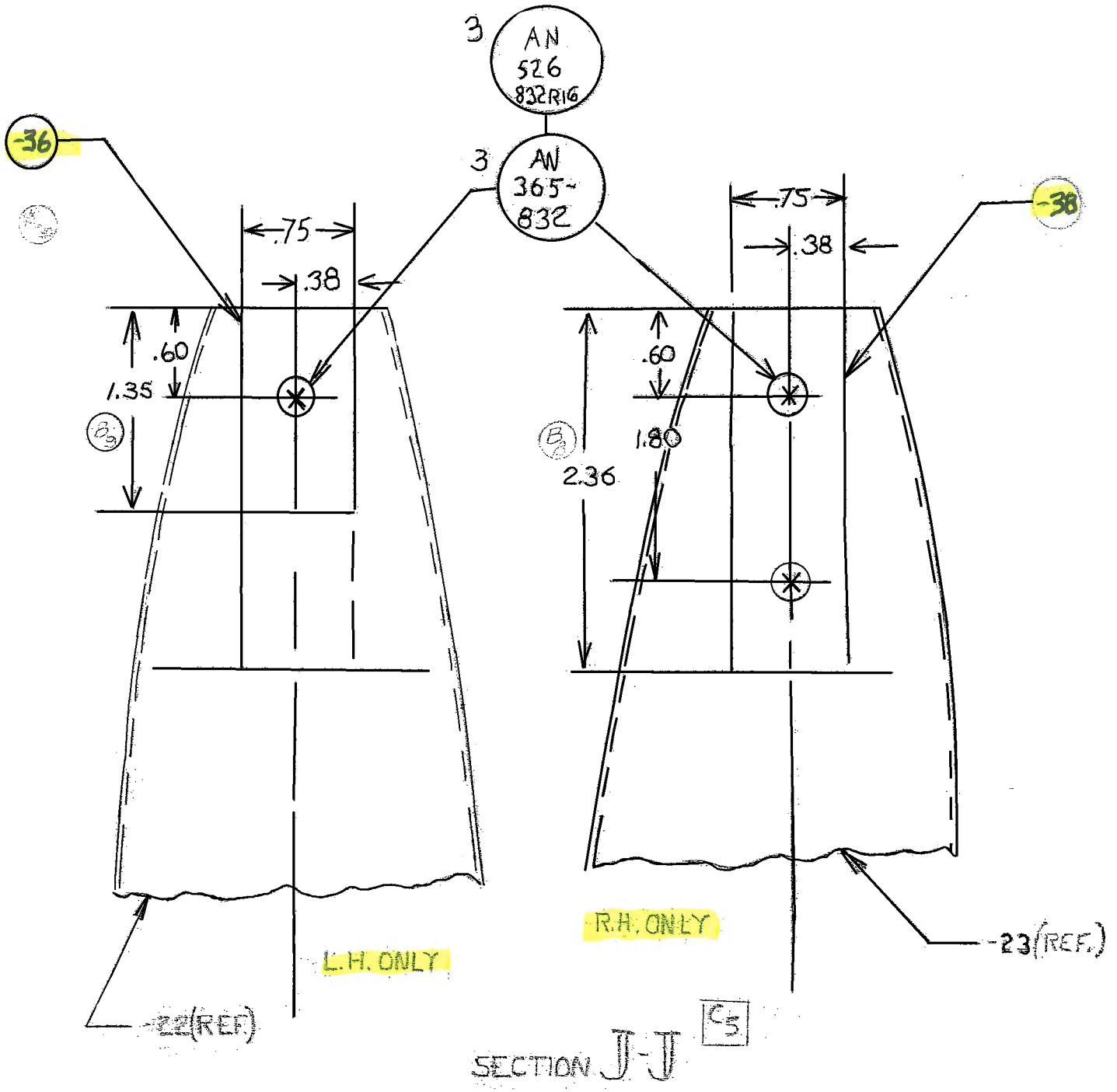
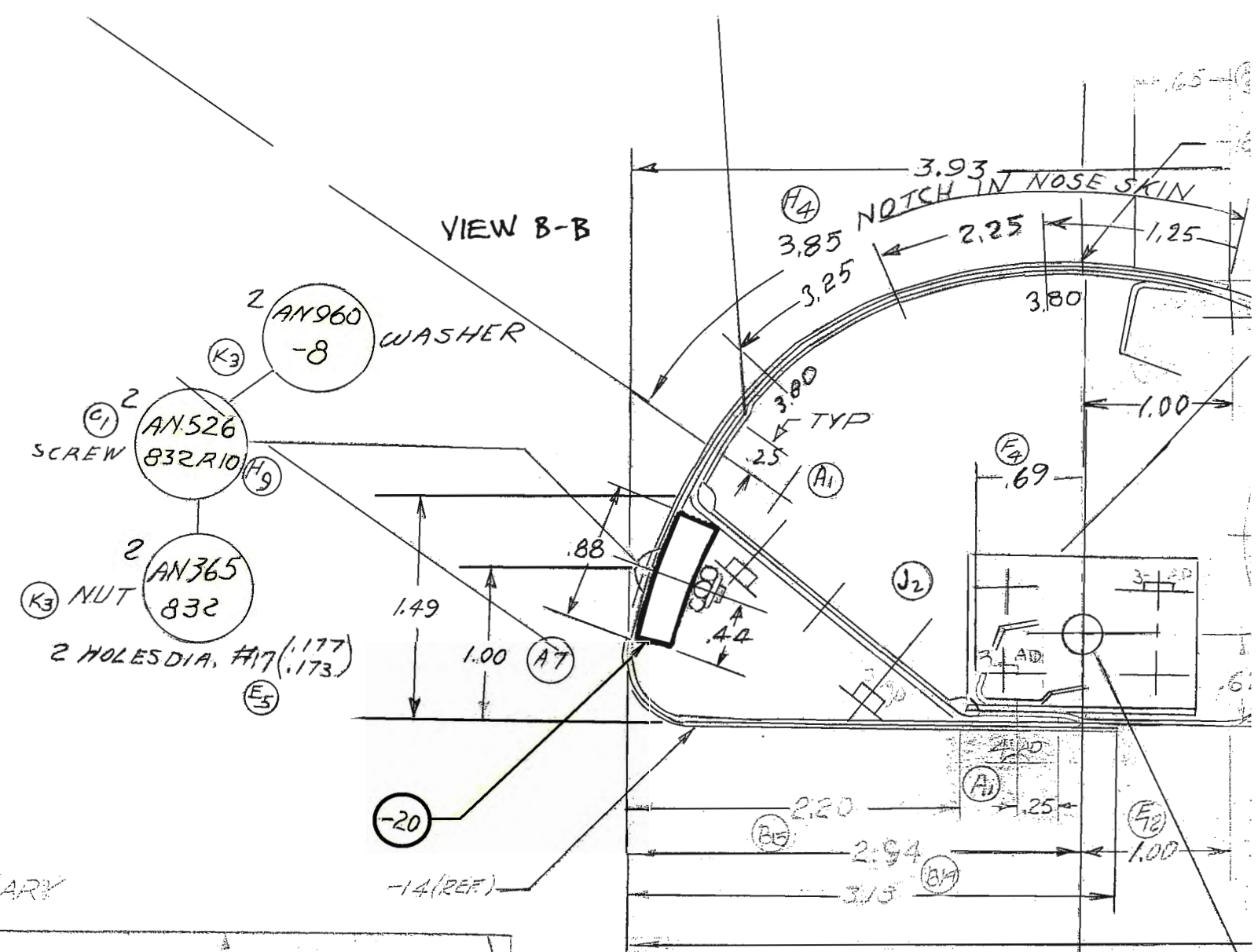


FIG. 2
 108-2201007
 DETAIL - LEAD
 WEIGHT ATTACHMENT

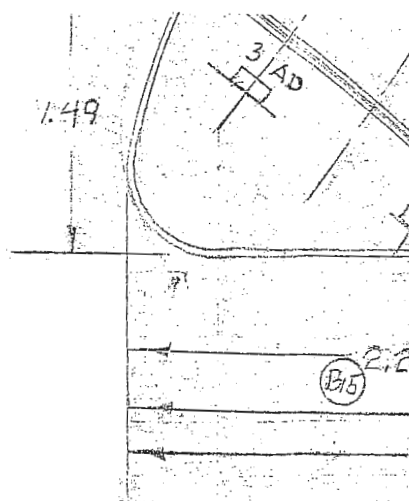
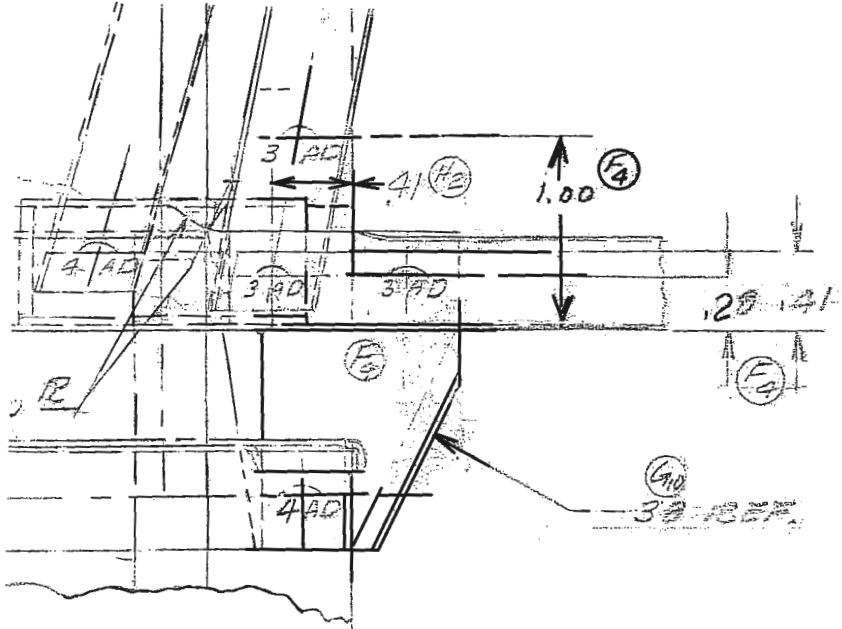


DRILL LINE REAR .250 ± .001
 ON ASSEM WITH -285-2
 IN LINE WITH 108-17110

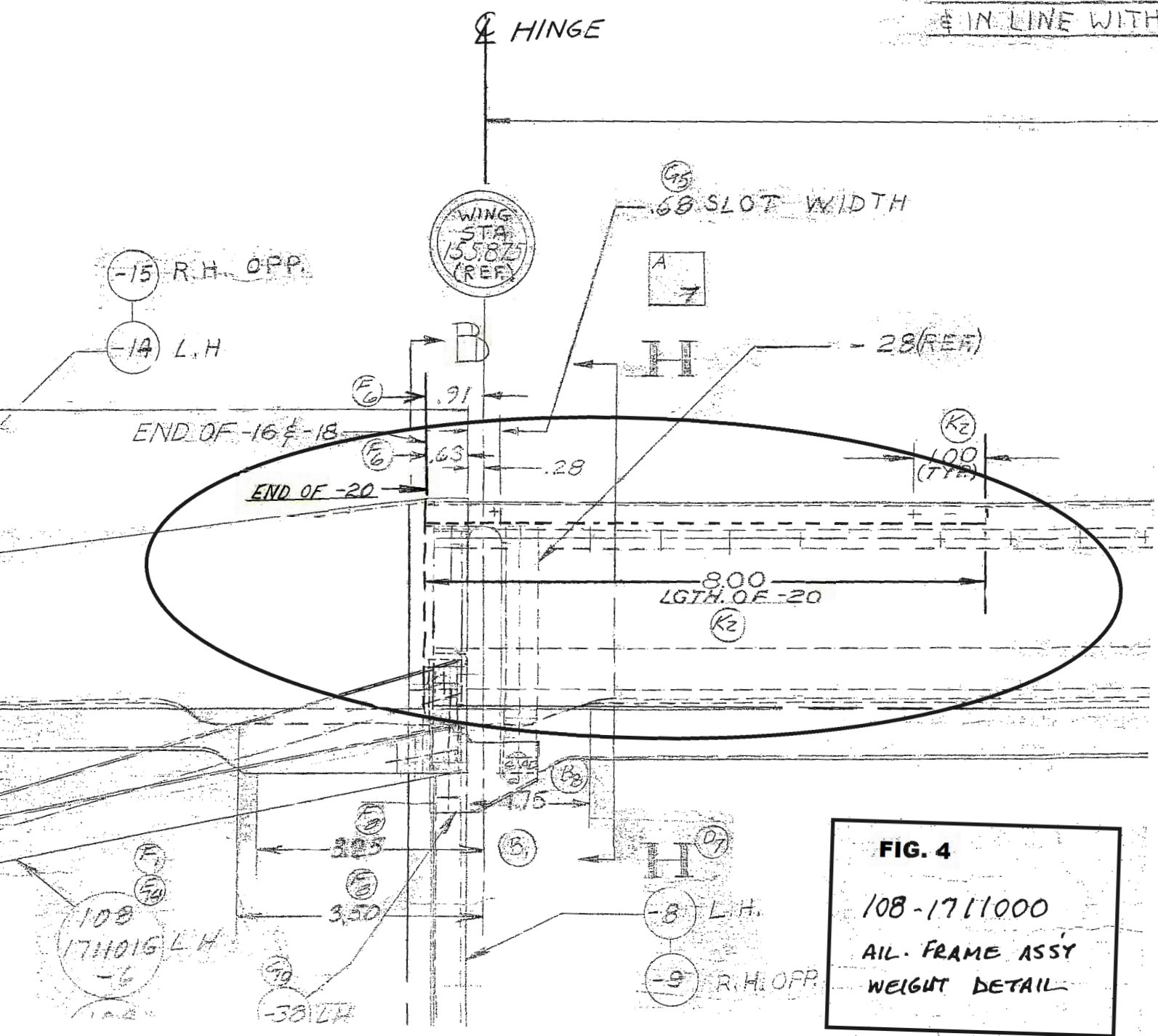
HINGE

FIG. 3

108-1711000 VIEW B-B



DRILL LINE REAM
ON ASSEMBLY
IN LINE WITH



12. ALL OPERATIONS SHALL CONFORM TO UNIVAIR PROCESS MANUAL NO. 1.

11. WHEN 108-2602100-20 MOLD IS FILLED TO THE TOP WITH LEAD & 108-2602100-20 BLOCK IS INSTALLED IN RUDDER, THE STATIC BALANCE REQUIREMENT OF NOTE 3 WILL BE MET.

10. 108-2611007 RIB IS ALT. FOR 108-2602100-54 RIB FOR REPLACEMENT SPARE PARTS.

9. AN470 RIVETS ALT. FOR AN456 & AN442 RIVETS
8. TAB ASS'Y. 12905-12 SAME AS 108-2602100-64 EXCEPT SKIN MATERIAL CHANGED FROM .016 24 SO CLAD ALUM (WITH BEADS) TO .020 24ST CLAD ALUM (WITHOUT BEADS).

AN4703AD RIVETS ALT. (F)

AN442-AD4-4	12	WASHER
AN456-AD4-7	2	
AN456-AD4-6	2	
AN456-AD4-5	24	
AN960-10	10	WASHER
AN380-2-2	2	COTTER PIN
AN320-3	1	NUT
AN23-10	1	
AN3-21	2	BOLT
AN3-12	1	
AN3-5A	6	
AN931-6-10	1	GROMMET
AN310-3	1	NUT
108-3042430-0	1	CONTROL SHAFT ASS
108-3042425-8	1	BUSHING
108-2661001	1	BRACKET
108-2611008-2	1	HORN ASS'Y.
108-2611004	2	CHANNEL
108-2611003-0	1	FITTING ASS'Y.
108-2611002-0	1	FITTING ASS'Y.
108-2611000-22	1	SPACER
108-2611000-12	2	REINFORCEMENT
108-2602101-6	1	SPRING
108-2602100-52	1	BRACKET
108-2602100-62	1	FAIRING (.020 3003 H14 A
108-2602100-54	1	RIB
108-2602100-42	1	CHANNEL
108-2602100-36	1	HINGE
108-2602100-34	1	
108-2602100-32	2	CLIP
108-2602100-30	1	
108-2602100-28	1	
108-2602100-20	1	BLOCK (SEE NOTE 11)
108-2602100-16	1	RIB
108-2602100-15	1	REINFORCEMENT
108-2602100-14	1	
108-2602100-9	1	TIP SKIN
108-2602100-8	1	
-12	1	TAB ASS'Y (SEE NOTE 8)
-11	2	.020x4.5x7.5
-10	1	.020x1.75x30.5
-9	1	.020x2.13x12.5
-8	1	
-7	1	.032x.5x6
-6	2	.020x2x14.28
-5	2	.020x2x36
-4	1	.032x4x73.75
-3	1	.020x15.25x76
-2	1	

NOTES:
 1. THIS RUDDER ASS'Y. IS INTERCHANGEABLE WITH STINSON RUDDER ASS'Y. NO. 108-2602100-0 & SHALL BE USE IN PLACE OF RUDDER ASS'Y 108-2602100-0 FOR SERVICE USE.
 2. PART NUMBERS WITH '108' AS THE FIRST 3 DIGITS ARE ORIGINAL STINSON PART NUMBERS.
 3. STATIC UNBALANCE SHALL NOT EXCEED 19.4 IN. LBS.
 4. SEE STINSON LOFT LAYOUT FOR BEVELS & CONTOURS.
 5. TOLERANCES:
 ANGULAR ±1° (F)
 GENERAL ±.03
 6. RIVET SYMBOLS:
 # AN456 DIA. IN 32NDS MATERIAL
 # AN442
 7. PARTS MARKED USED ON LEFT SIDE ONLY.
 PARTS MARKED USED ON RIGHT SIDE ONLY.

LET.	REVISION	DATE	BY	MODEL	PER PLANE	NEXT ASSEMBLY	SUPERSEDES	SUP. BY
J	SEE E.O. 60510	2-27-58	CB					
H	SEE E.O. 60431	12-8-50	MW					
G	SEE E.O. 60348	12-27-50	JD					
F	DWG. UPDATE E.O. 60252	7-13-54	JW					
E	SEE E.O. 60233	2-17-54	JN					
D	SEE E.O. 60072	1-31-58	CB					
C	SEE E.O. 60062	10-27-57	CB					
B	14608 & RIVETS ADD. RIVET REV.	4-27-55	ECN					
	NOTE 8 REV. 1/2 SPLICE SEC'S D & E-ADD. BJM FOR 2-3-56 WAS 1-5-56 WAS 3-5-56 WAS 1-3-54 ADD.	2-23-53	JWM					

SCALE 6 IN = 1 FT & NOTED
 FINISH-PIPER SPECIFICATION #10
 MANUFACTURING PRACTICES-PIPER SPECIFICATION #9

NEW
 RUDDER ASSEMBLY
 INTERCHANGEABLE WITH
 STINSON 108-2602100

12 H. R. K.
 5-18-50 5-23-50
 DRAFTSMAN CHECKER STANDARDS

108-12905

PIPER AIRCRAFT CORP.
 LOCK HAVEN, PENNA.

THIS DRAWING IS THE PROPERTY OF THE PIPER AIRCRAFT CORP. AND ITS POSSESSION BY UNAUTHORIZED PERSONS SHALL NOT BE CONSTRUED AS PERMISSION TO REPRODUCE FOR SALE, IN WHOLE OR IN PART, ANY DEVICES SHOWN THEREON.